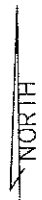
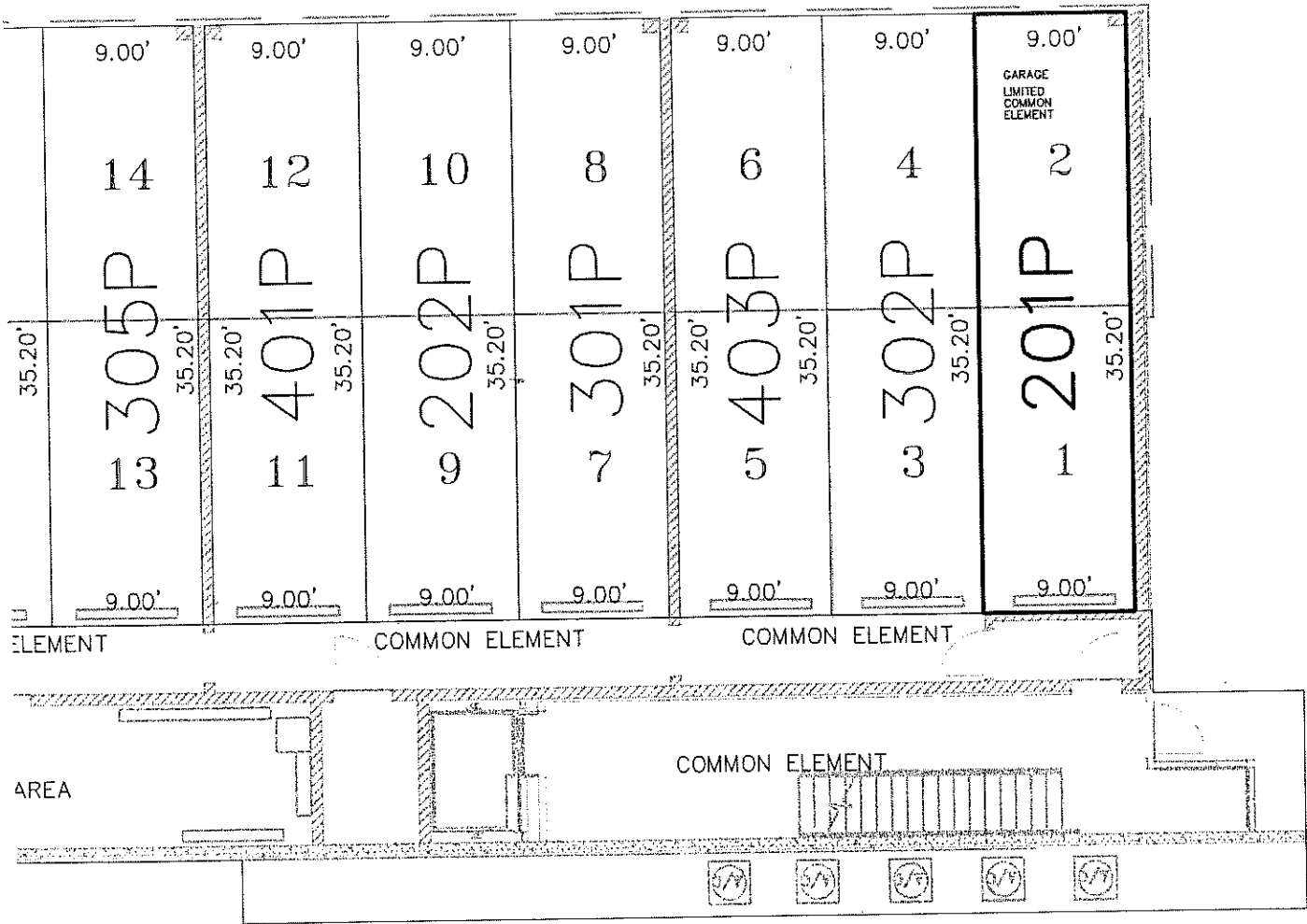


# FIRST FLOOR

PARKING-201P

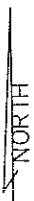
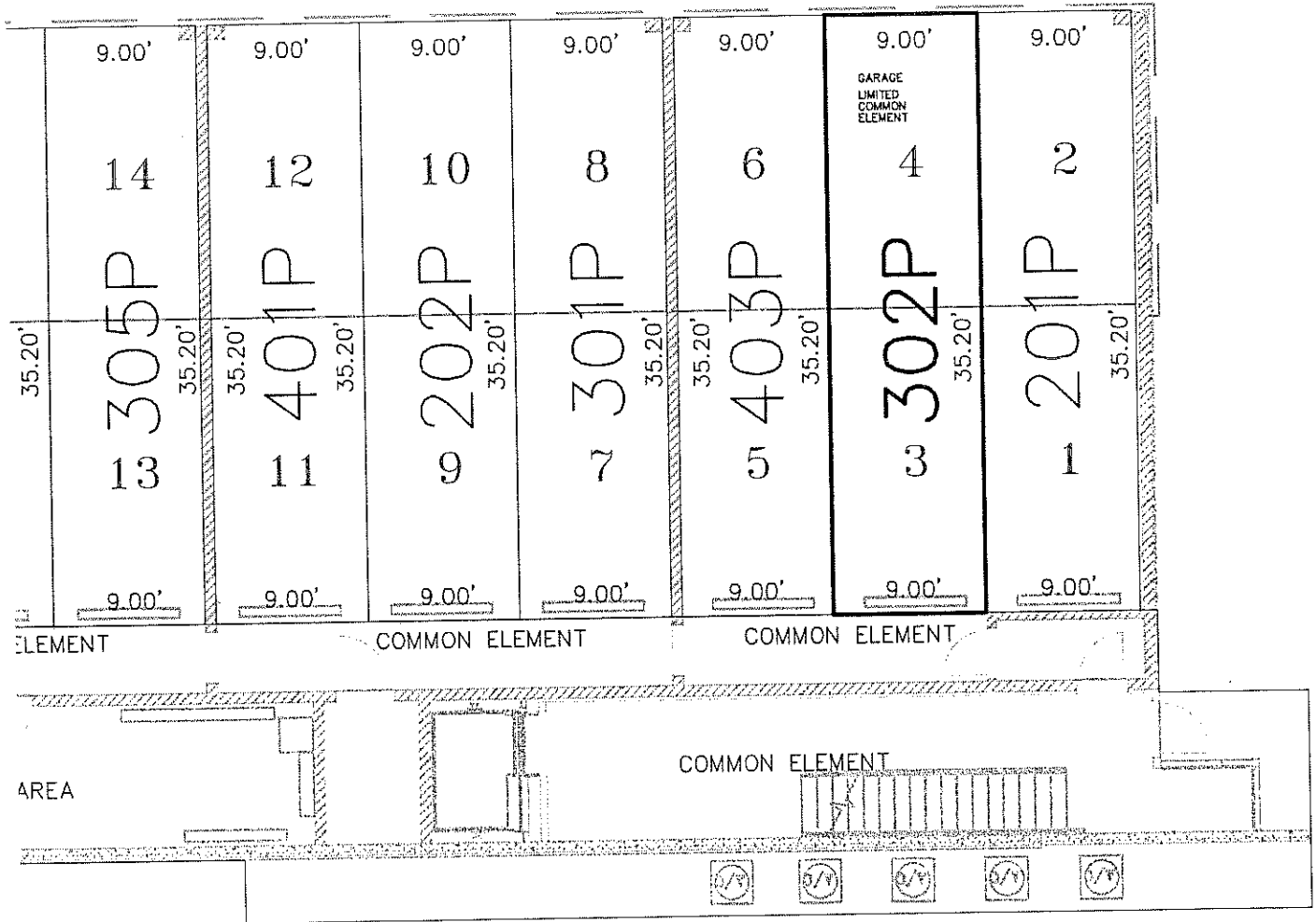


**ag** EHRHART  
 GRIFFIN &  
 ASSOCIATES

3552 Farnam Street -- Omaha, Nebraska 68131 -- (402) 551-0631  
 ENGINEERING -- PLANNING -- LAND SURVEYING

# FIRST FLOOR

PARKING-302P

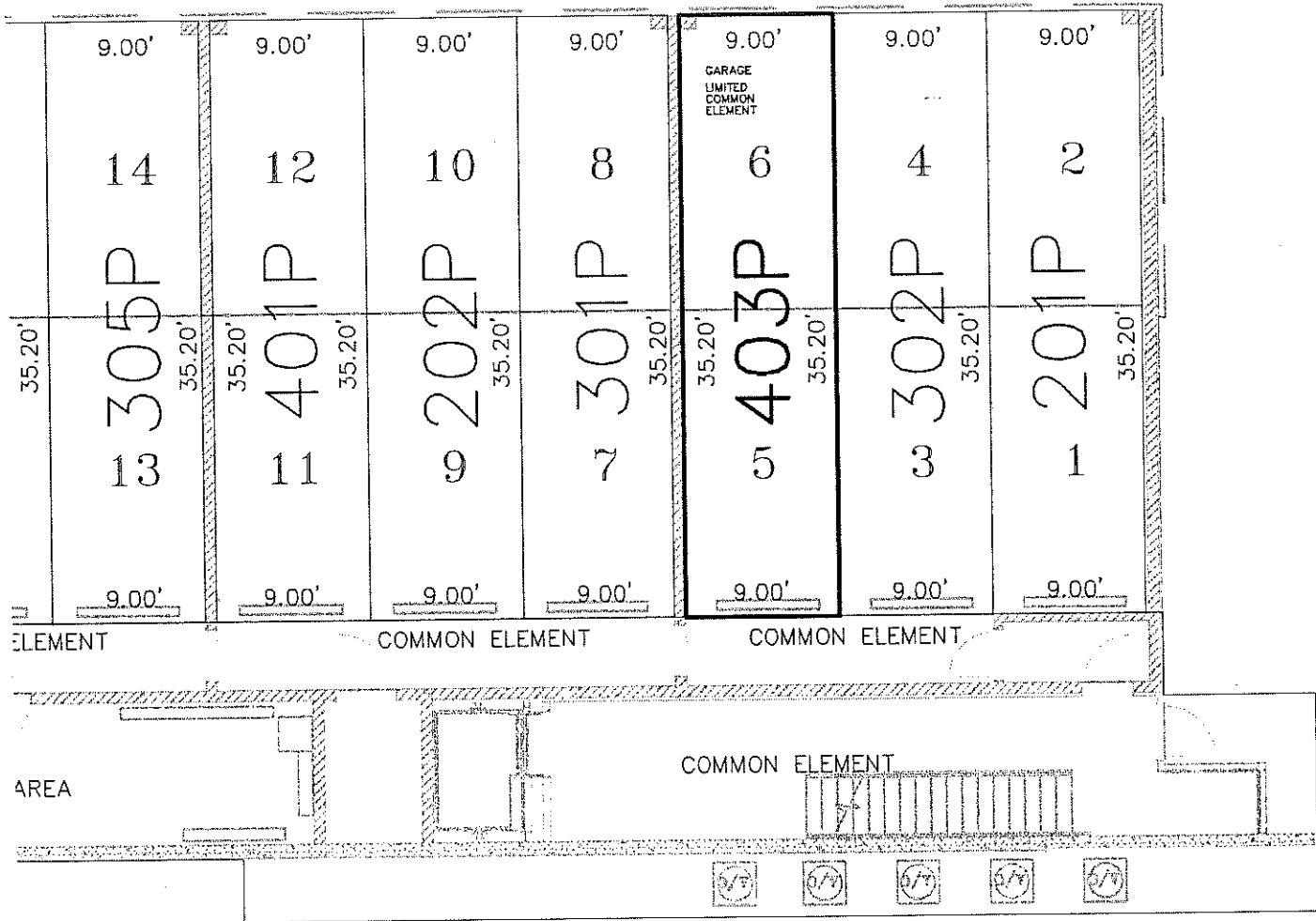


**EHRHART  
GRIFFIN &  
ASSOCIATES**

3552 Farnam Street -- Omaha, Nebraska 68131 -- (402) 551-0631  
ENGINEERING -- PLANNING -- LAND SURVEYING

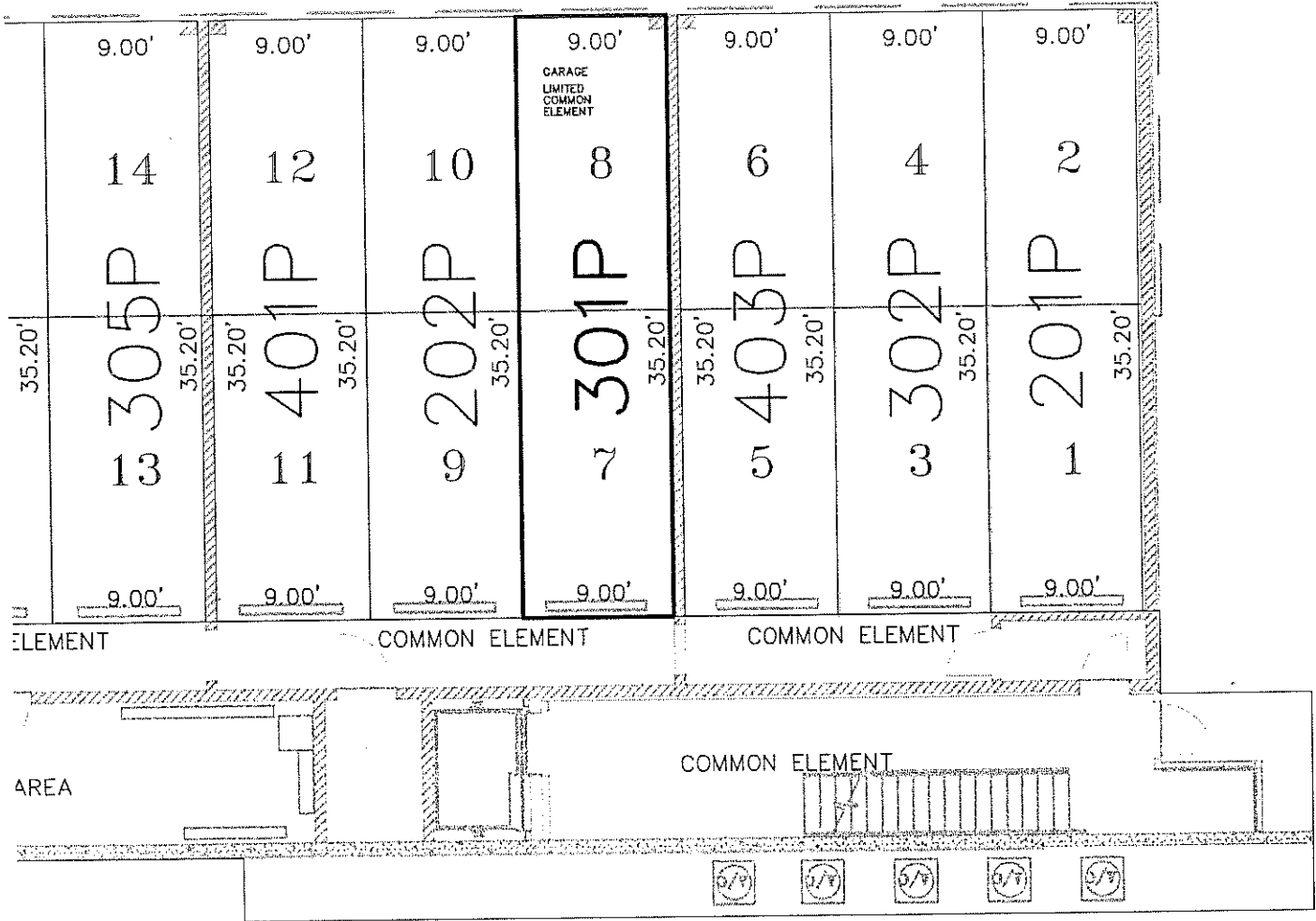
# FIRST FLOOR

PARKING-403P



# FIRST FLOOR

PARKING-301P

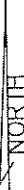
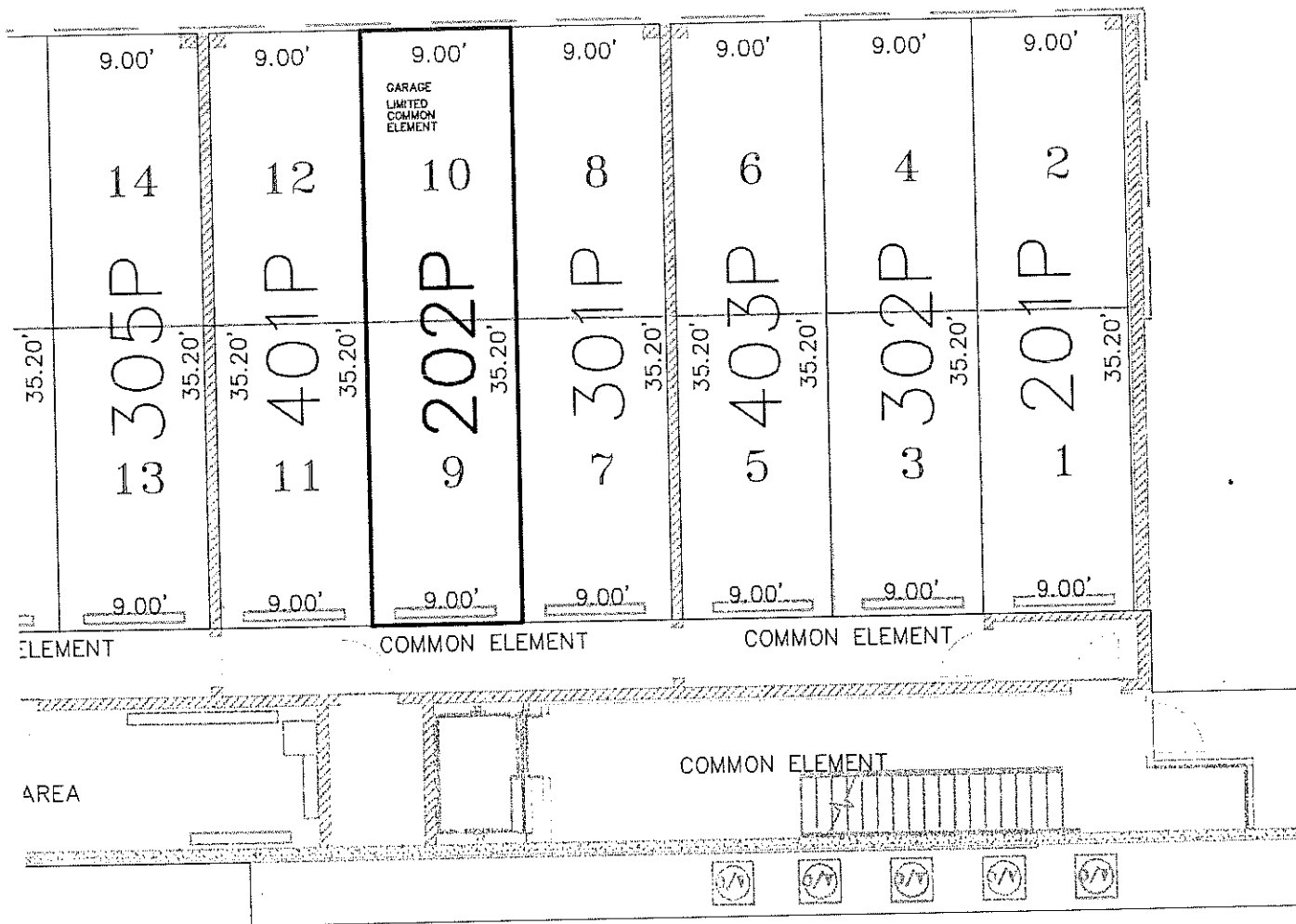


**EHRHART  
GRIFFIN &  
ASSOCIATES**

3552 Farnam Street -- Omaha, Nebraska 68131 -- (402) 551-0631  
ENGINEERING -- PLANNING -- LAND SURVEYING

# FIRST FLOOR

PARKING-202P

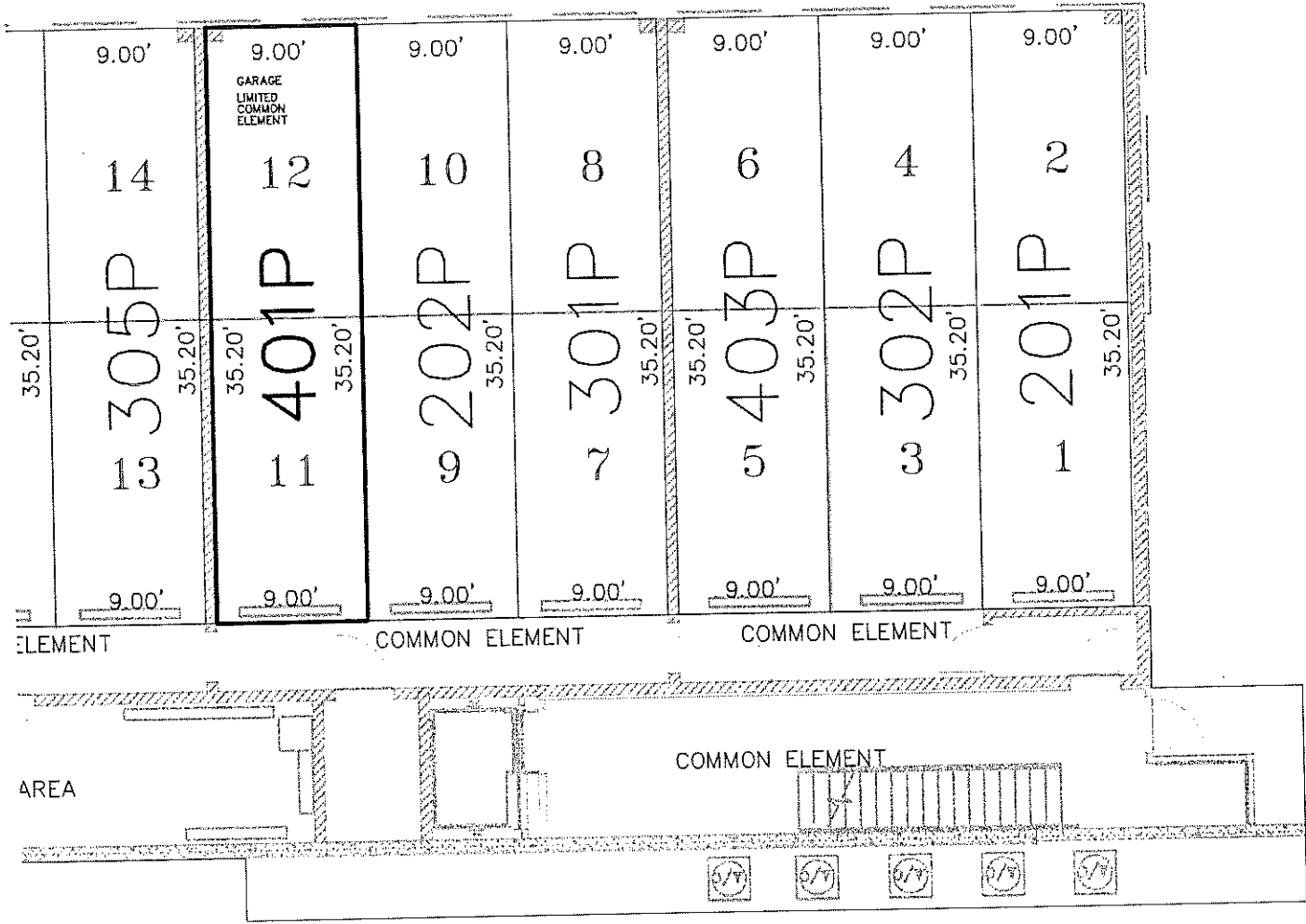


**EHRHART  
GRIFFIN &  
ASSOCIATES**

3552 Farnam Street -- Omaha, Nebraska 68131 -- (402) 551-0631  
ENGINEERING -- PLANNING -- LAND SURVEYING

# FIRST FLOOR

PARKING-401P

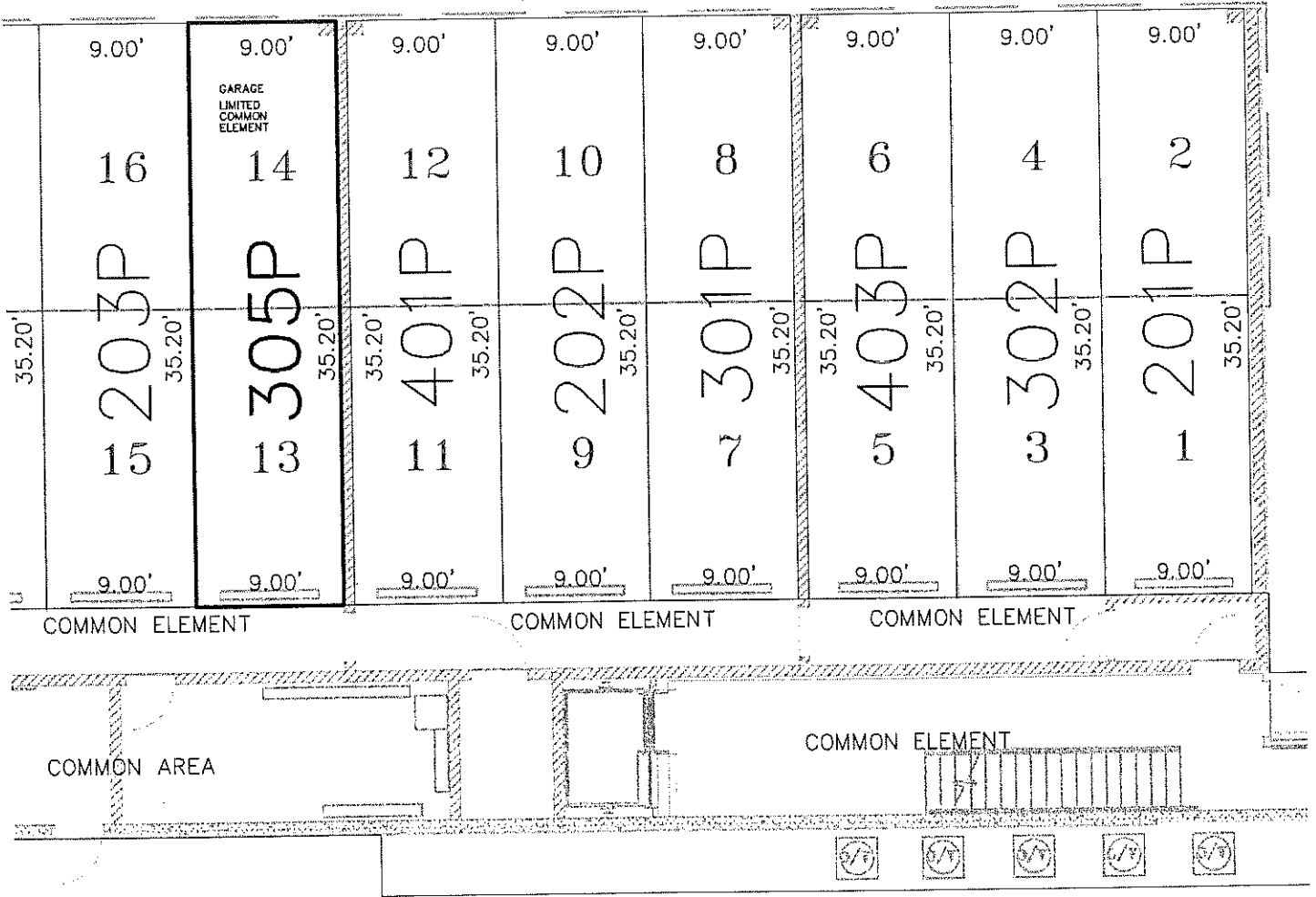


**EHRHART  
GRIFFIN &  
ASSOCIATES**

3552 Farnam Street -- Omaha, Nebraska 68131 -- (402) 551-0631  
ENGINEERING -- PLANNING -- LAND SURVEYING

# FIRST FLOOR

PARKING-305P

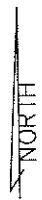
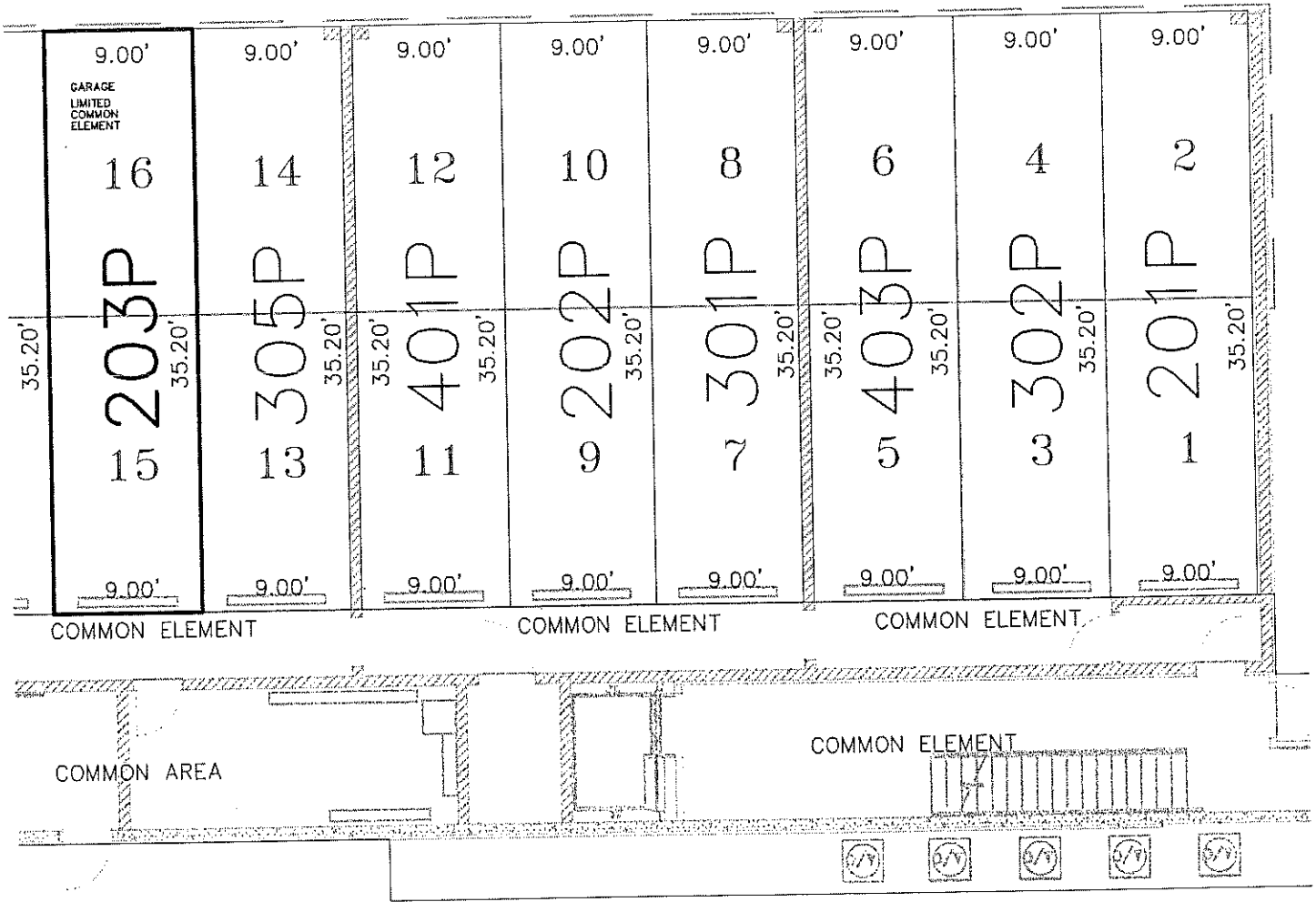


**EHRHART  
GRIFFIN &  
ASSOCIATES**

3552 Farnam Street -- Omaha, Nebraska 68131 -- (402) 551-0631  
ENGINEERING -- PLANNING -- LAND SURVEYING

# FIRST FLOOR

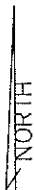
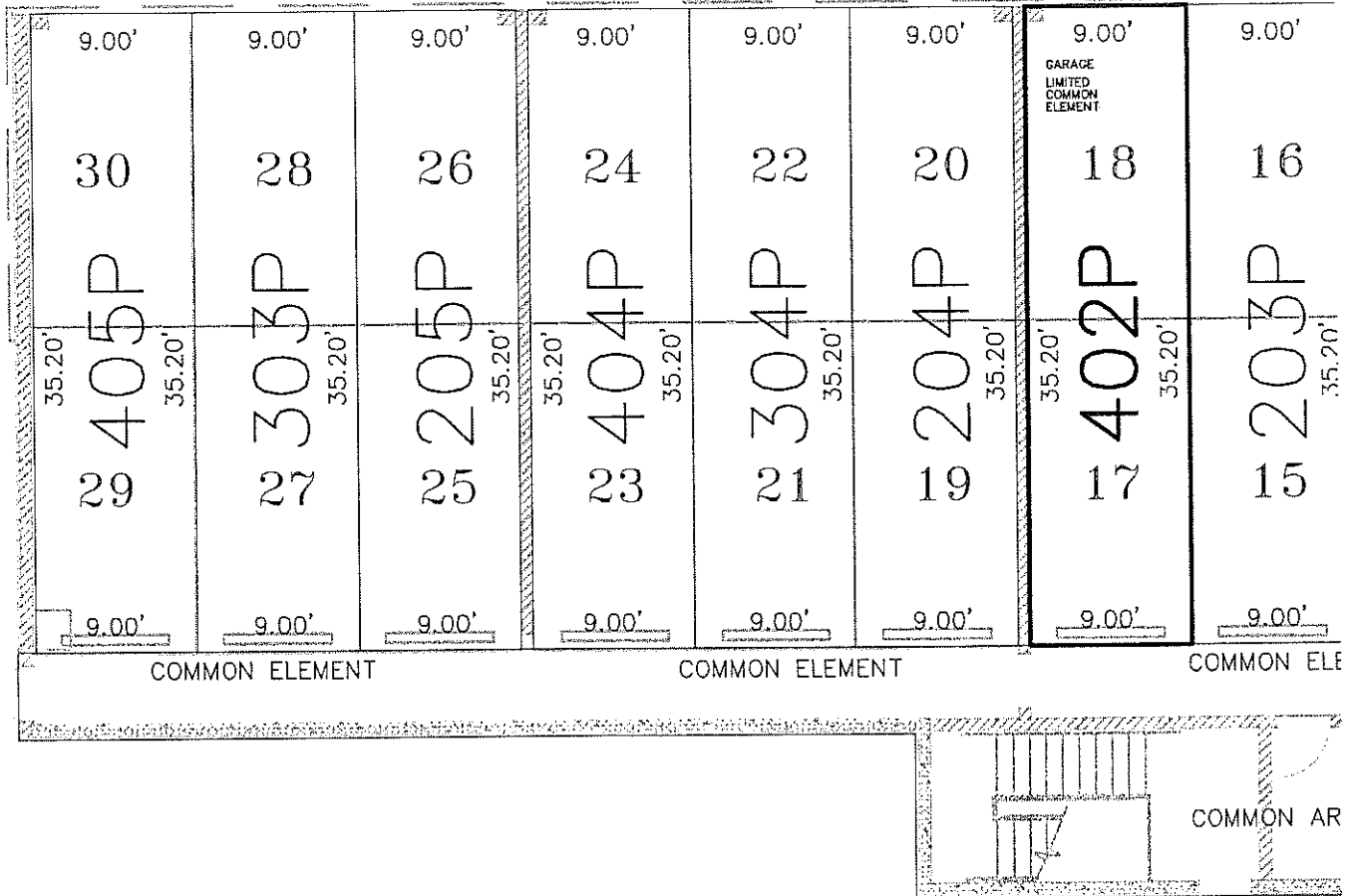
PARKING-203P





# FIRST FLOOR

PARKING-402P

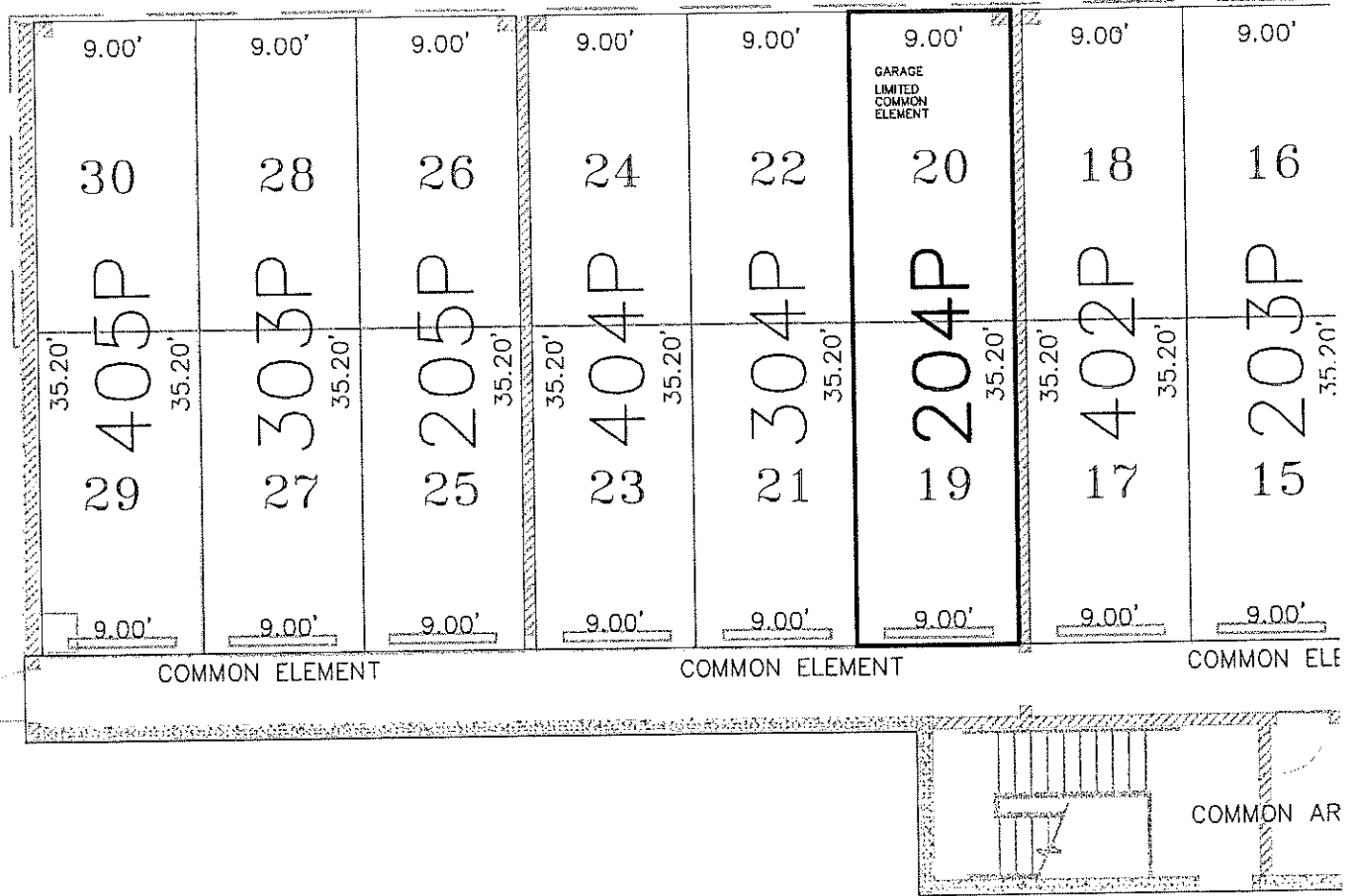


**EHRHART  
GRIFFIN &  
ASSOCIATES**

3552 Farnam Street -- Omaha, Nebraska 68131 -- (402) 551-0631  
ENGINEERING -- PLANNING -- LAND SURVEYING

# FIRST FLOOR

PARKING-204P



**EHRHART  
GRIFFIN &  
ASSOCIATES**

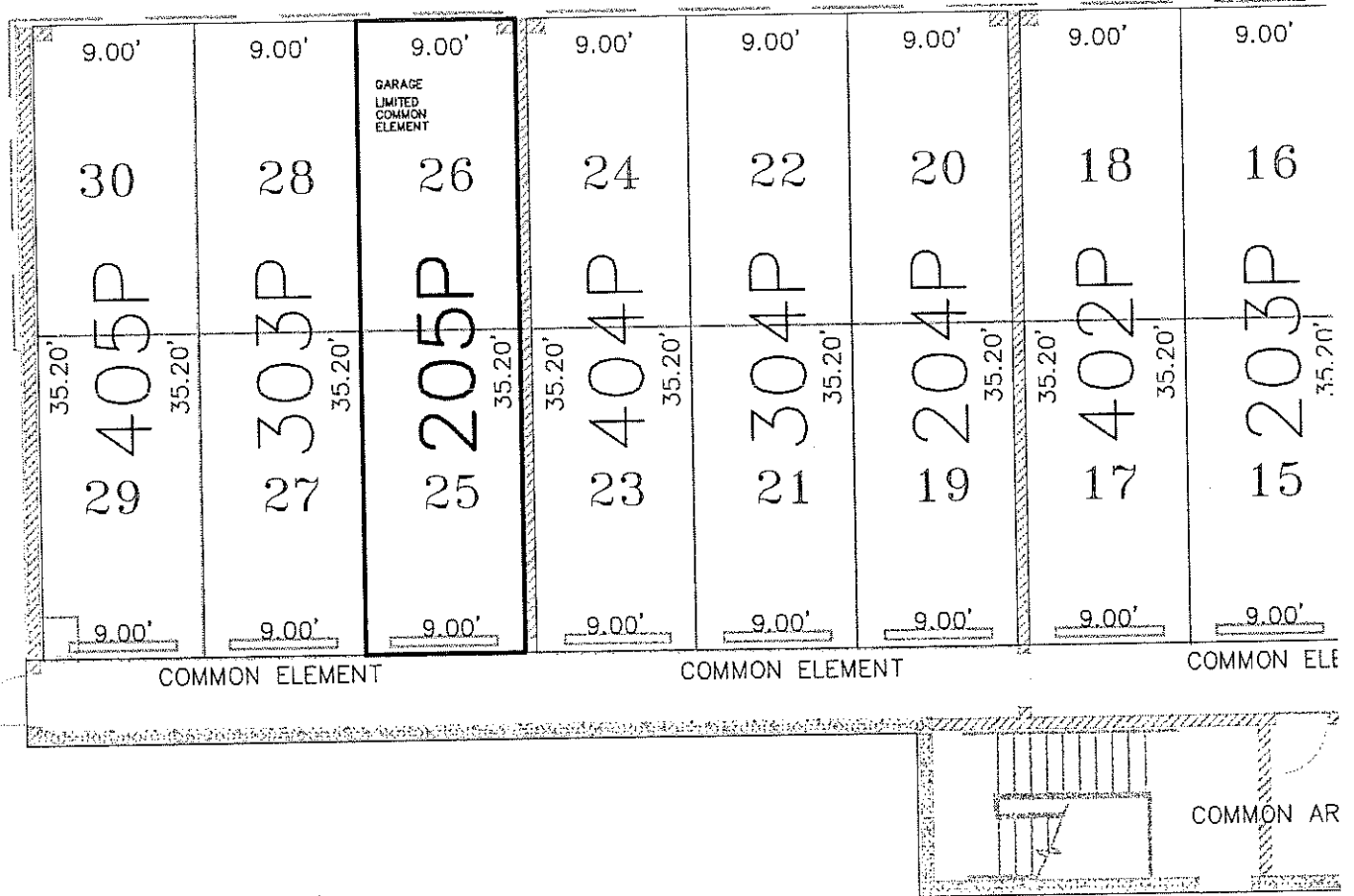
3552 Farnam Street -- Omaha, Nebraska 68131 -- (402) 551-0631  
ENGINEERING -- PLANNING -- LAND SURVEYING





# FIRST FLOOR

PARKING-205P

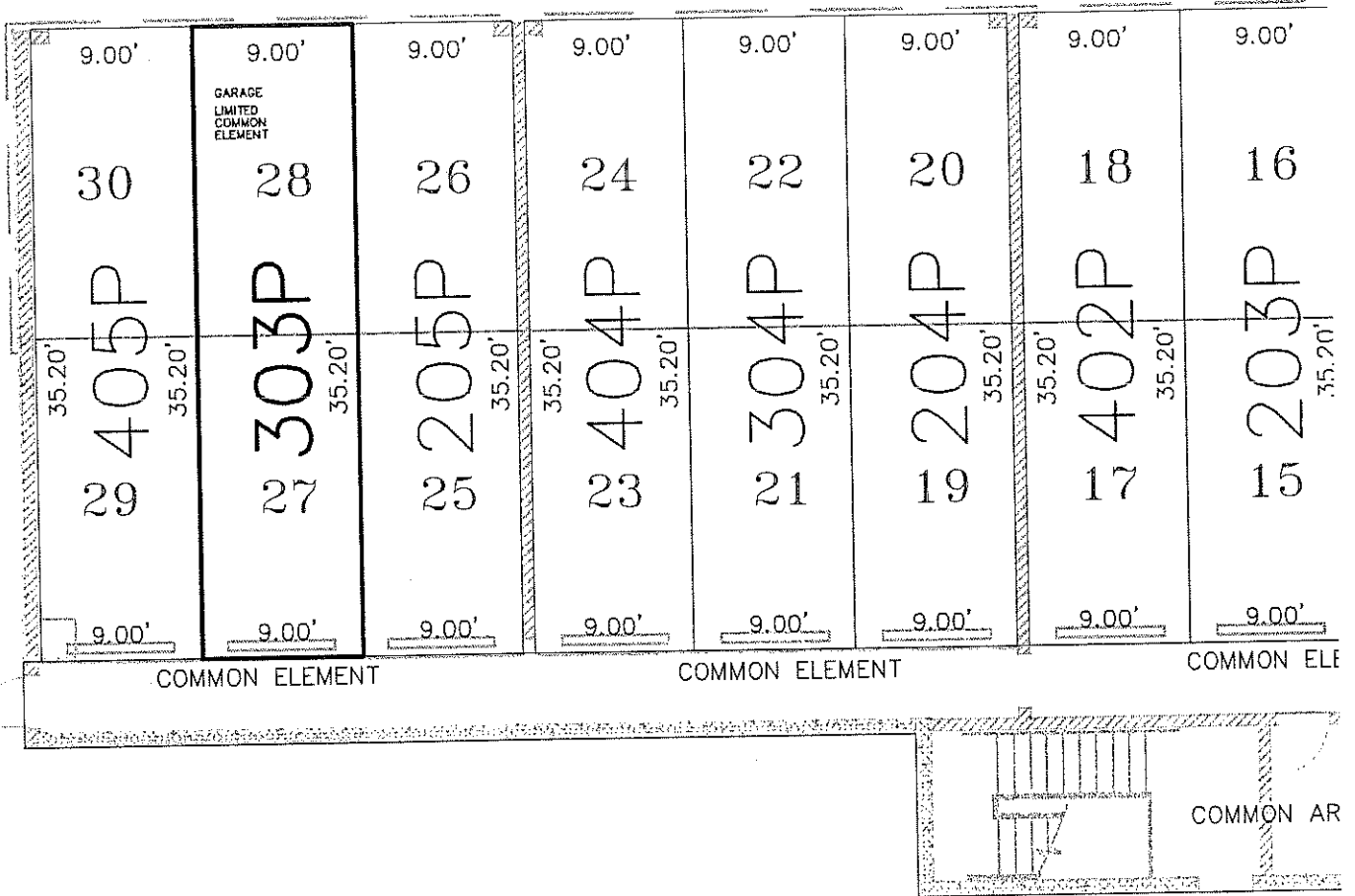


**EHRHART  
GRIFFIN &  
ASSOCIATES**

3552 Farnam Street -- Omaha, Nebraska 68131 -- (402) 551-0631  
ENGINEERING -- PLANNING -- LAND SURVEYING

# FIRST FLOOR

PARKING-303P

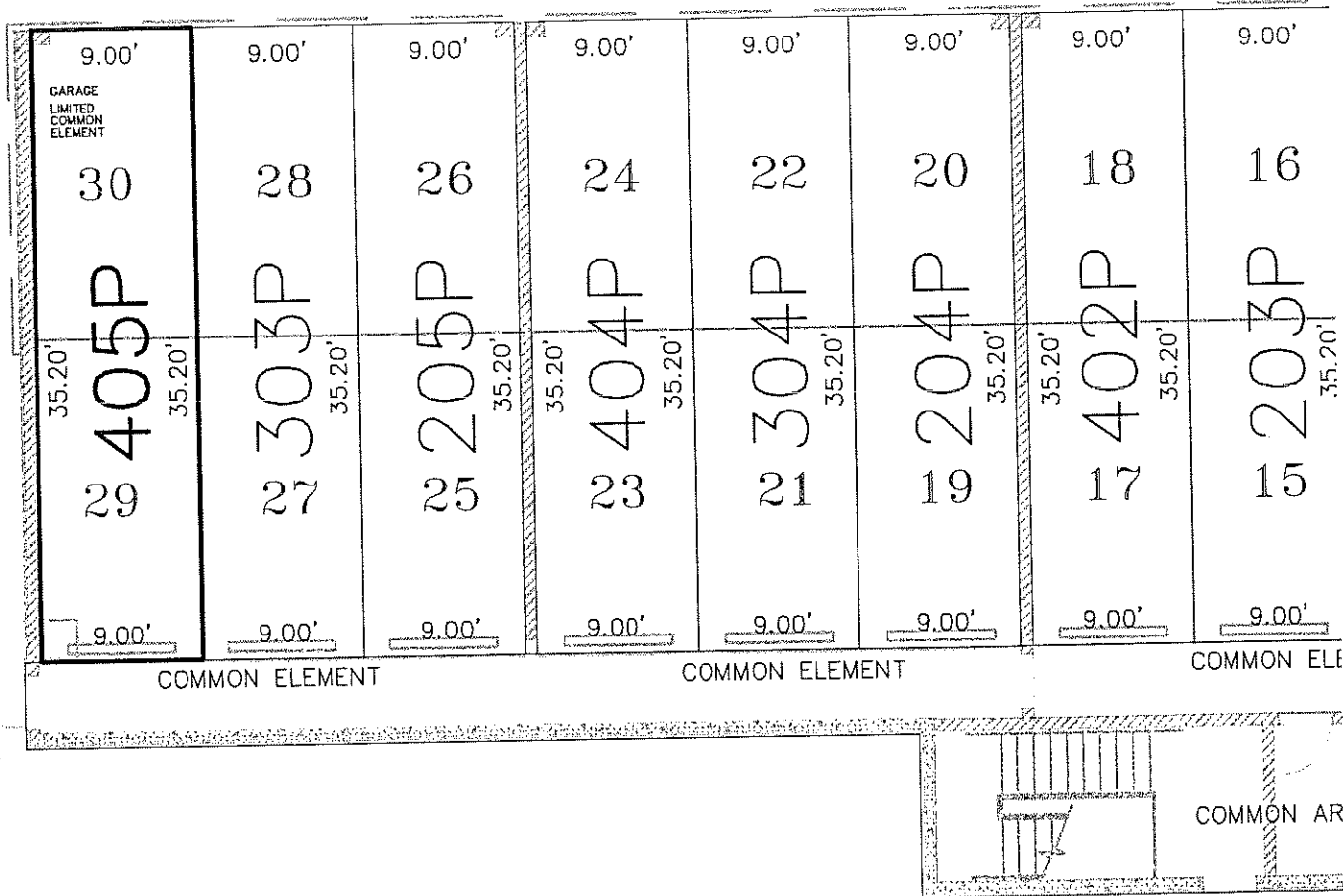


**age** EHRHART  
 GRIFFIN &  
 ASSOCIATES

3552 Farnam Street -- Omaha, Nebraska 68131 -- (402) 551-0631  
 ENGINEERING -- PLANNING -- LAND SURVEYING

# FIRST FLOOR

PARKING-405P



**ag** EHRHART  
 GRIFFIN &  
 ASSOCIATES  
 3552 Farnam Street -- Omaha, Nebraska 68131 -- (402) 551-0631  
 ENGINEERING -- PLANNING -- LAND SURVEYING

Exhibit "C"

Units	Percentage Interest	No. of Votes
Unit 201	6.06	1,088
Unit 202	5.22	938
Unit 203	5.06	909
Unit 204	5.22	938
Unit 205	6.17	1,107
Unit 301	6.06	1,088
Unit 302	5.22	938
Unit 303	5.06	909
Unit 304	5.22	938
Unit 305	6.17	1,107
Unit 401	9.49	1,704
Unit 402	8.54	1,532
Unit 403	8.37	1,503
Unit 404	8.54	1,532
Unit 405	9.60	1,723