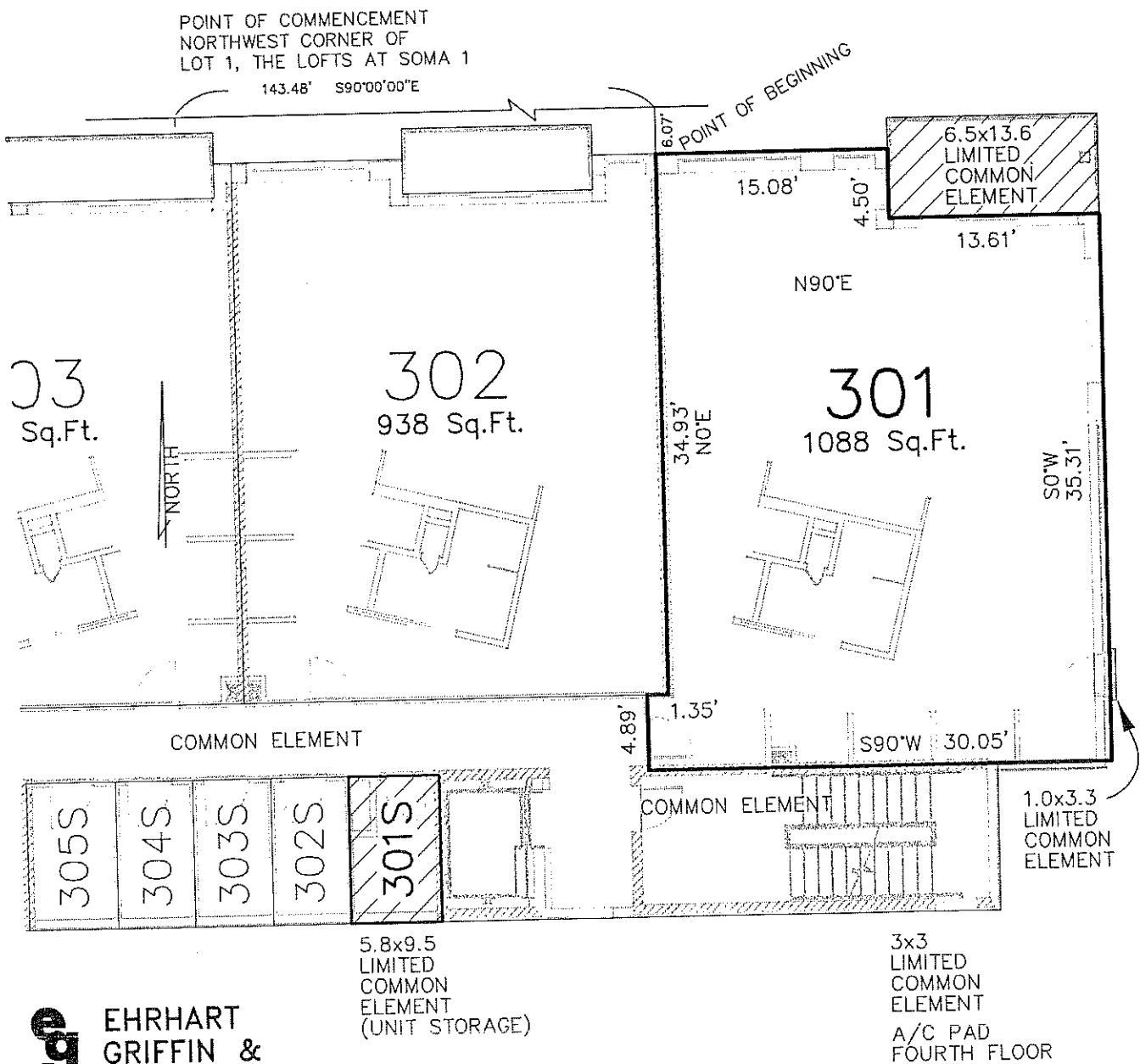


THIRD FLOOR

UNIT 301



**EHRHART
GRIFFIN &
ASSOCIATES**

3552 Farnam Street -- Omaha, Nebraska 68131 -- (402) 551-0631
ENGINEERING -- PLANNING -- LAND SURVEYING

301

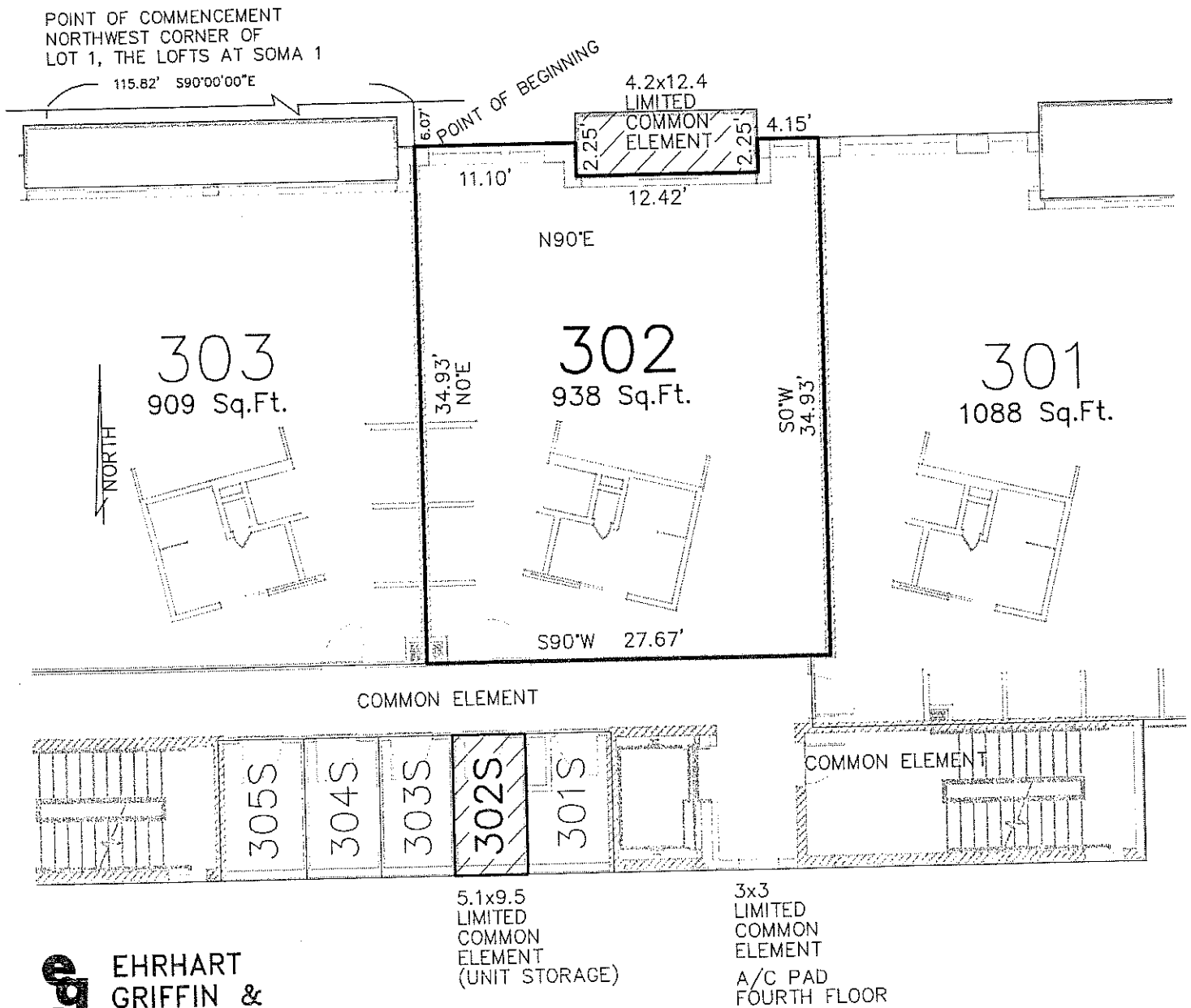
LEGAL DESCRIPTION: UNIT 301, THE LOFTS AT SOMA 1, A CONDOMINIUM

A PORTION OF LOT 1, THE LOFTS AT SOMA 1, AS SURVEYED, PLATTED AND RECORDED IN DOUGLAS COUNTY, NEBRASKA, LYING ABOVE A HORIZONTAL PLANE SITUATED AT ELEVATION 22.95 FEET AND LYING BELOW A HORIZONTAL PLANE SITUATED AT ELEVATION 34.95 FEET, AND HORIZONTALLY BOUNDED AS FOLLOWS:

COMMENCE AT THE NORTHWEST CORNER OF LOT 1, THE LOFTS AT SOMA 1; THENCE SOUTH 90°00'00" EAST ALONG THE NORTH LINE OF SAID LOT 1, A DISTANCE OF 143.48 FEET; THENCE SOUTH 0°00'00" EAST, A DISTANCE OF 6.07 FEET TO THE POINT OF BEGINNING; THENCE NORTH 90°00'00" EAST, A DISTANCE OF 15.08 FEET; THENCE SOUTH 0°00'00" WEST, A DISTANCE OF 4.50 FEET; THENCE NORTH 90°00'00" EAST, A DISTANCE OF 13.61 FEET; THENCE SOUTH 0°00'00" WEST, A DISTANCE OF 35.31 FEET; THENCE SOUTH 90°00'00" WEST, A DISTANCE OF 30.05 FEET; THENCE NORTH 0°00'00" EAST, A DISTANCE OF 4.89 FEET; THENCE NORTH 90°00'00" EAST, A DISTANCE OF 1.35 FEET; THENCE NORTH 0°00'00" EAST, A DISTANCE OF 34.93 FEET TO THE POINT OF BEGINNING.

THIRD FLOOR

UNIT 302



**EHRHART
GRIFFIN &
ASSOCIATES**

3552 Farnam Street -- Omaha, Nebraska 68131 -- (402) 551-0631
ENGINEERING -- PLANNING -- LAND SURVEYING

302

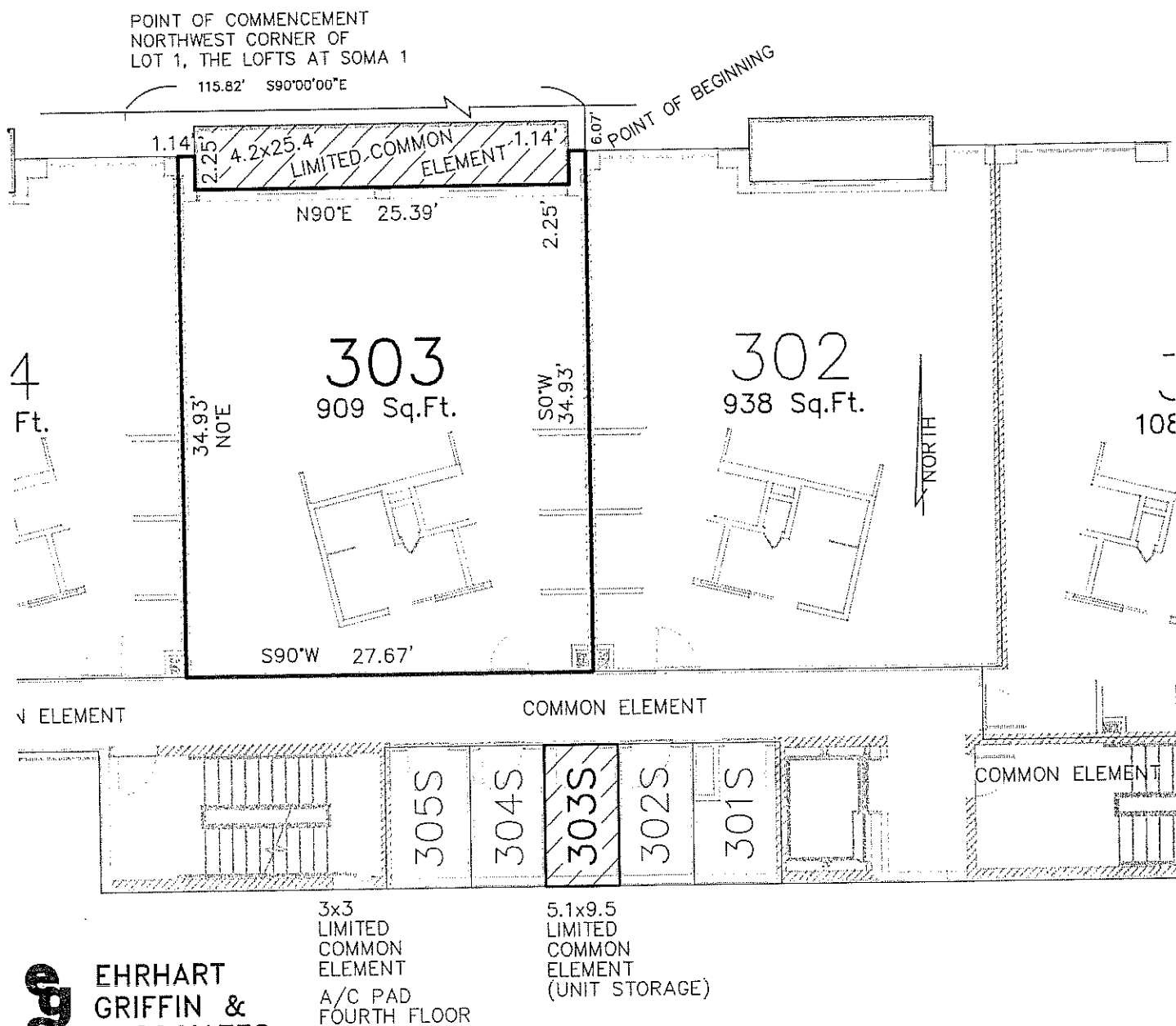
LEGAL DESCRIPTION: UNIT 302, THE LOFTS AT SOMA 1, A CONDOMINIUM

A PORTION OF LOT 1, THE LOFTS AT SOMA 1, AS SURVEYED, PLATTED AND RECORDED IN DOUGLAS COUNTY, NEBRASKA, LYING ABOVE A HORIZONTAL PLANE SITUATED AT ELEVATION 22.95 FEET AND LYING BELOW A HORIZONTAL PLANE SITUATED AT ELEVATION 34.95 FEET, AND HORIZONTALLY BOUNDED AS FOLLOWS:

COMMENCE AT THE NORTHWEST CORNER OF LOT 1, THE LOFTS AT SOMA 1; THENCE SOUTH 90°00'00" EAST ALONG THE NORTH LINE OF SAID LOT 1, A DISTANCE OF 115.82 FEET; THENCE SOUTH 0°00'00" EAST, A DISTANCE OF 6.07 FEET TO THE POINT OF BEGINNING; THENCE NORTH 90°00'00" EAST, A DISTANCE OF 11.10 FEET; THENCE SOUTH 0°00'00" WEST, A DISTANCE OF 2.25 FEET; THENCE NORTH 90°00'00" EAST, A DISTANCE OF 12.42 FEET; THENCE NORTH 0°00'00" EAST, A DISTANCE OF 2.25 FEET; THENCE NORTH 90°00'00" EAST, A DISTANCE OF 4.15 FEET; THENCE SOUTH 0°00'00" WEST, A DISTANCE OF 34.93 FEET; THENCE SOUTH 90°00'00" WEST, A DISTANCE OF 27.67 FEET; THENCE NORTH 0°00'00" EAST, A DISTANCE OF 34.93 FEET TO THE POINT OF BEGINNING.

THIRD FLOOR

UNIT 303



**EHRHART
GRIFFIN &
ASSOCIATES**

3552 Farnam Street -- Omaha, Nebraska 68131 -- (402) 551-0631
ENGINEERING -- PLANNING -- LAND SURVEYING

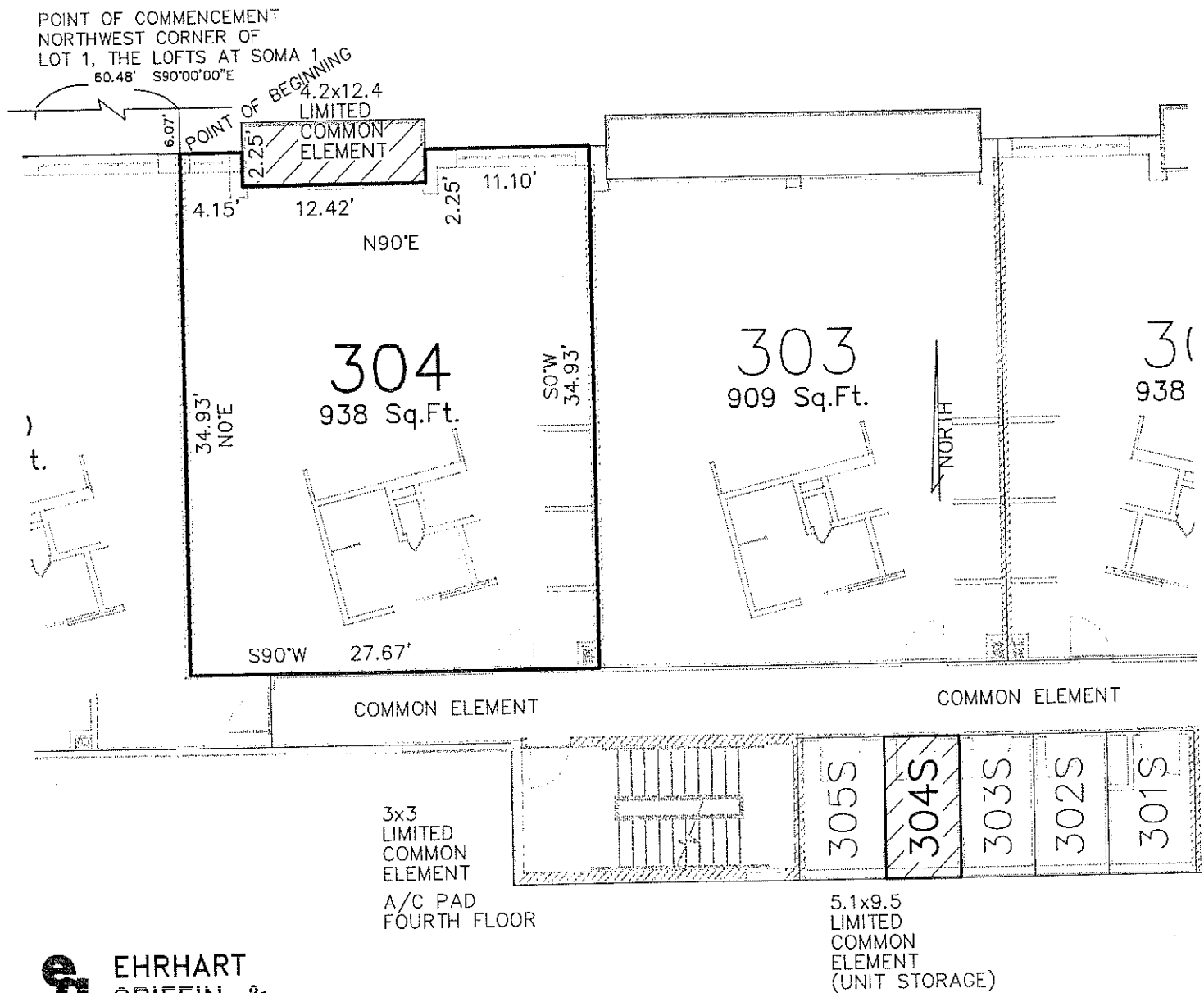
LEGAL DESCRIPTION: UNIT 303, THE LOFTS AT SOMA 1, A CONDOMINIUM

A PORTION OF LOT 1, THE LOFTS AT SOMA 1, AS SURVEYED, PLATTED AND RECORDED IN DOUGLAS COUNTY, NEBRASKA, LYING ABOVE A HORIZONTAL PLANE SITUATED AT ELEVATION 22.95 FEET AND LYING BELOW A HORIZONTAL PLANE SITUATED AT ELEVATION 34.95 FEET, AND HORIZONTALLY BOUNDED AS FOLLOWS:

COMMENCE AT THE NORTHWEST CORNER OF LOT 1, THE LOFTS AT SOMA 1; THENCE SOUTH 90°00'00" EAST ALONG THE NORTH LINE OF SAID LOT 1, A DISTANCE OF 115.82 FEET; THENCE SOUTH 0°00'00" EAST, A DISTANCE OF 6.07 FEET TO THE POINT OF BEGINNING; THENCE CONTINUE SOUTH 0°00'00" WEST, A DISTANCE OF 34.93 FEET; THENCE SOUTH 90°00'00" WEST, A DISTANCE OF 27.67 FEET; THENCE NORTH 0°00'00" EAST, A DISTANCE OF 34.93 FEET; THENCE NORTH 90°00'00" EAST, A DISTANCE OF 1.14 FEET; THENCE SOUTH 0°00'00" WEST, A DISTANCE OF 2.25 FEET; THENCE NORTH 90°00'00" EAST, A DISTANCE OF 25.39 FEET; THENCE NORTH 0°00'00" EAST, A DISTANCE OF 2.25 FEET; THENCE NORTH 90°00'00" EAST, A DISTANCE OF 1.14 FEET TO THE POINT OF BEGINNING.

THIRD FLOOR

UNIT 304



**EHRHART
GRIFFIN &
ASSOCIATES**

3552 Farnam Street -- Omaha, Nebraska 68131 -- (402) 551-0631
ENGINEERING -- PLANNING -- LAND SURVEYING

304

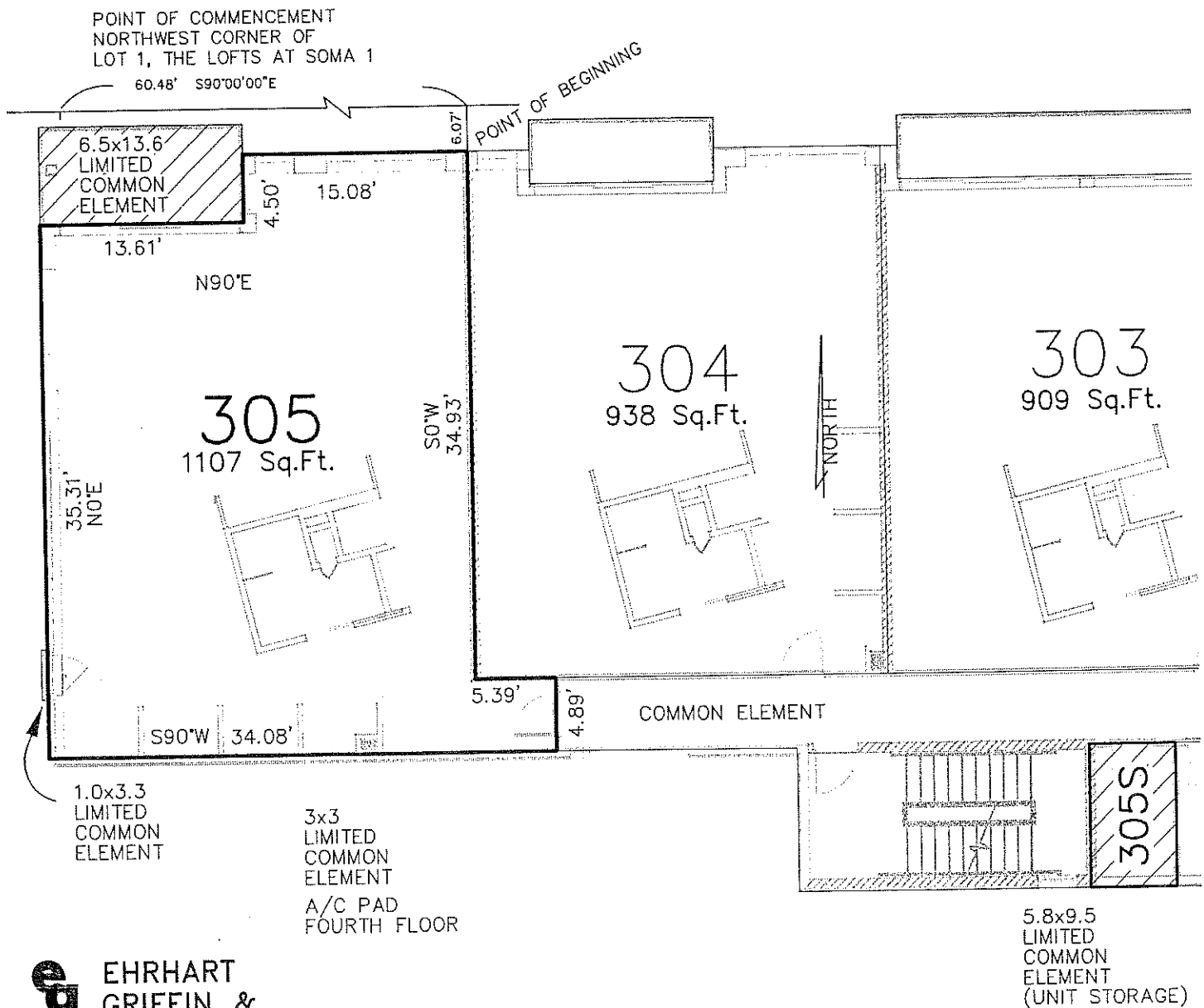
LEGAL DESCRIPTION: UNIT 304, THE LOFTS AT SOMA 1, A CONDOMINIUM

A PORTION OF LOT 1, THE LOFTS AT SOMA 1, AS SURVEYED, PLATTED AND RECORDED IN DOUGLAS COUNTY, NEBRASKA, LYING ABOVE A HORIZONTAL PLANE SITUATED AT ELEVATION 22.95 FEET AND LYING BELOW A HORIZONTAL PLANE SITUATED AT ELEVATION 34.95 FEET, AND HORIZONTALLY BOUNDED AS FOLLOWS:

COMMENCE AT THE NORTHWEST CORNER OF LOT 1, THE LOFTS AT SOMA 1; THENCE SOUTH 90°00'00" EAST ALONG THE NORTH LINE OF SAID LOT 1, A DISTANCE OF 60.48 FEET; THENCE SOUTH 0°00'00" EAST, A DISTANCE OF 6.07 FEET TO THE POINT OF BEGINNING; THENCE NORTH 90°00'00" EAST, A DISTANCE OF 4.15 FEET; THENCE SOUTH 0°00'00" WEST, A DISTANCE OF 2.25 FEET; THENCE NORTH 90°00'00" EAST, A DISTANCE OF 12.42 FEET; THENCE NORTH 0°00'00" EAST, A DISTANCE OF 2.25 FEET; THENCE NORTH 90°00'00" EAST, A DISTANCE OF 11.10 FEET; THENCE SOUTH 0°00'00" WEST, A DISTANCE OF 34.93 FEET; THENCE SOUTH 90°00'00" WEST, A DISTANCE OF 27.67 FEET; THENCE NORTH 0°00'00" EAST, A DISTANCE OF 34.93 FEET TO THE POINT OF BEGINNING.

THIRD FLOOR

UNIT 305



**EHRHART
GRIFFIN &
ASSOCIATES**

3552 Farnam Street -- Omaha, Nebraska 68131 -- (402) 551-0631
ENGINEERING -- PLANNING -- LAND SURVEYING

305

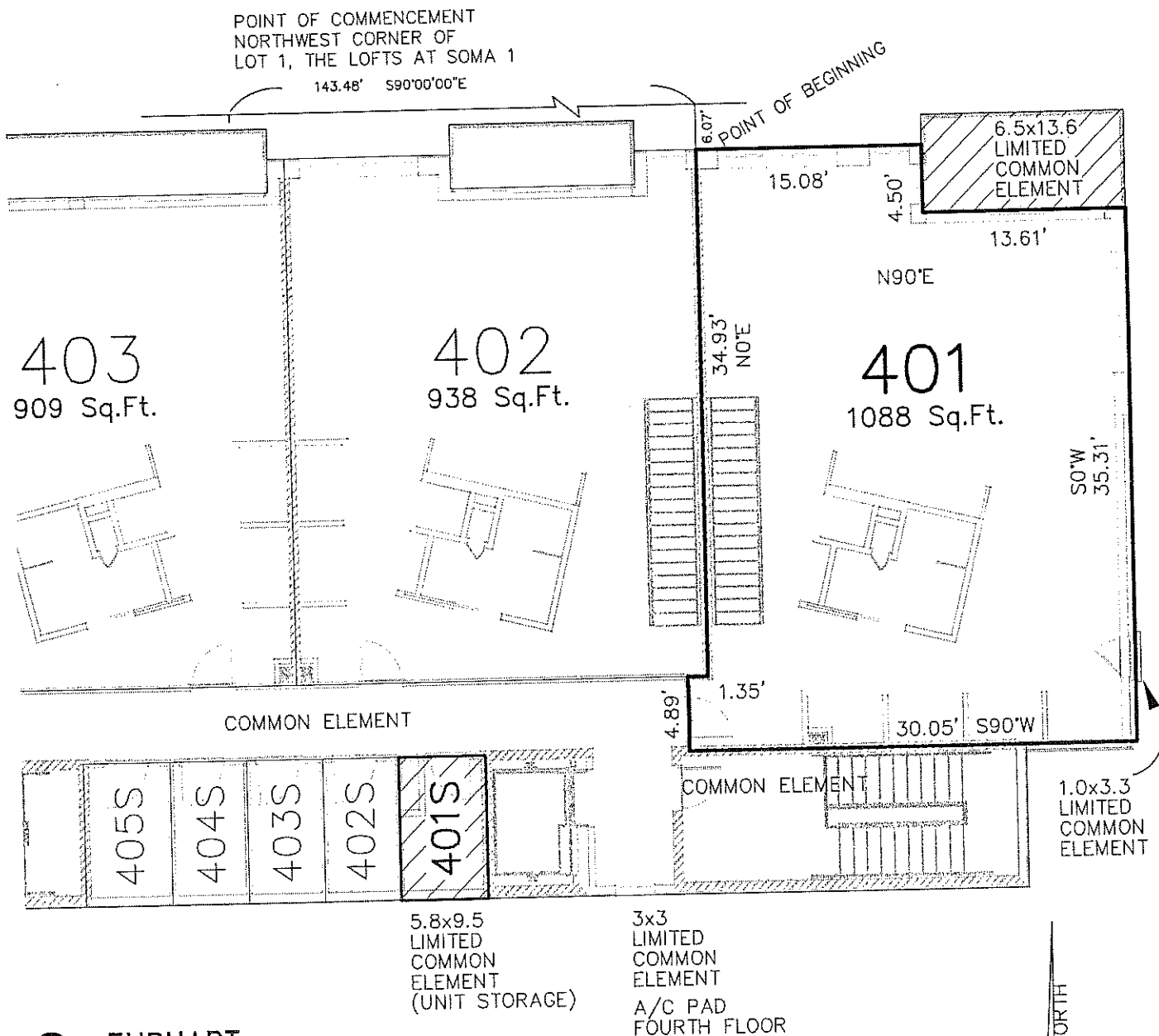
LEGAL DESCRIPTION: UNIT 305, THE LOFTS AT SOMA 1, A CONDOMINIUM

A PORTION OF LOT 1, THE LOFTS AT SOMA 1, AS SURVEYED, PLATTED AND RECORDED IN DOUGLAS COUNTY, NEBRASKA, LYING ABOVE A HORIZONTAL PLANE SITUATED AT ELEVATION 22.95 FEET AND LYING BELOW A HORIZONTAL PLANE SITUATED AT ELEVATION 34.95 FEET, AND HORIZONTALLY BOUNDED AS FOLLOWS:

COMMENCE AT THE NORTHWEST CORNER OF LOT 1, THE LOFTS AT SOMA 1; THENCE SOUTH 90°00'00" EAST ALONG THE NORTH LINE OF SAID LOT 1, A DISTANCE OF 60.48 FEET; THENCE SOUTH 0°00'00" EAST, A DISTANCE OF 6.07 FEET TO THE POINT OF BEGINNING; THENCE CONTINUE SOUTH 0°00'00" WEST, A DISTANCE OF 34.93 FEET, THENCE NORTH 90°00'00" EAST, A DISTANCE OF 5.39 FEET; THENCE SOUTH 0°00'00" WEST, A DISTANCE OF 4.89 FEET; THENCE SOUTH 90°00'00" WEST, A DISTANCE OF 34.08 FEET; THENCE NORTH 90°00'00" EAST, A DISTANCE OF 35.31 FEET; THENCE NORTH 90°00'00" EAST, A DISTANCE OF 13.61 FEET; THENCE NORTH 0°00'00" EAST, A DISTANCE OF 4.50 FEET; THENCE NORTH 90°00'00" EAST, A DISTANCE OF 15.08 FEET TO THE POINT OF BEGINNING.

FOURTH FLOOR

UNIT 401

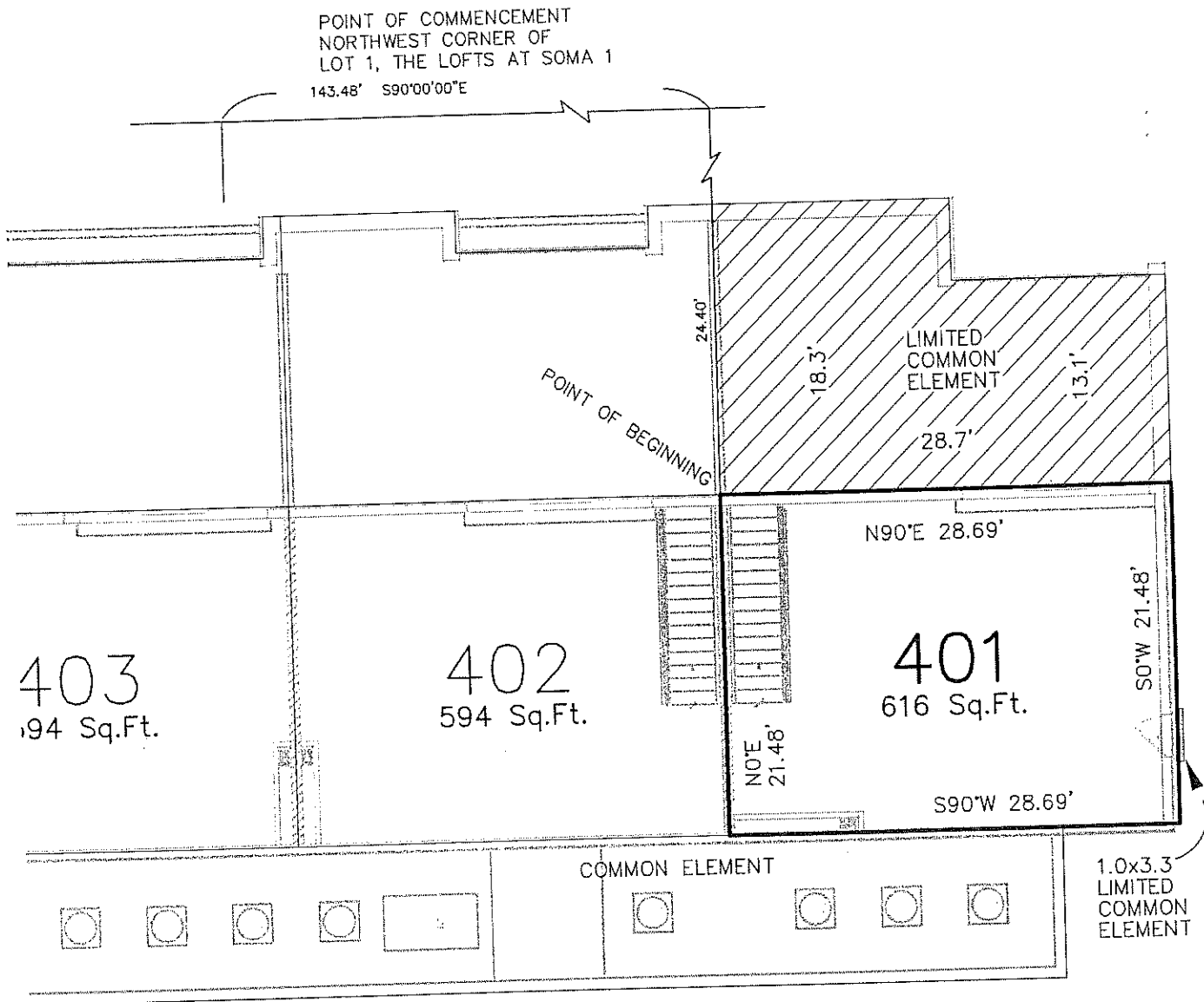


**EHRHART
GRIFFIN &
ASSOCIATES**

3552 Farnam Street -- Omaha, Nebraska 68131 -- (402) 551-0631
ENGINEERING -- PLANNING -- LAND SURVEYING

FIFTH FLOOR

UNIT 401



**EHRHART
GRIFFIN &
ASSOCIATES**

3552 Farnam Street -- Omaha, Nebraska 68131 -- (402) 551-0631
ENGINEERING -- PLANNING -- LAND SURVEYING

NORTH

LEGAL DESCRIPTION: UNIT 401

A PORTION OF LOT 1, THE LOFTS AT SOMA 1, AS SURVEYED, PLATTED AND RECORDED IN DOUGLAS COUNTY, NEBRASKA, LYING ABOVE A HORIZONTAL PLANE SITUATED AT ELEVATION 34.95 FEET AND LYING BELOW A HORIZONTAL PLANE SITUATED AT ELEVATION 46.95 FEET, AND HORIZONTALLY BOUNDED AS FOLLOWS:

COMMENCE AT THE NORTHWEST CORNER OF LOT 1, THE LOFTS AT SOMA 1; THENCE SOUTH 90°00'00" EAST ALONG THE NORTH LINE OF SAID LOT 1, A DISTANCE OF 143.48 FEET; THENCE SOUTH 0°00'00" EAST, A DISTANCE OF 6.07 FEET TO THE POINT OF BEGINNING; THENCE NORTH 90°00'00" EAST, A DISTANCE OF 15.08 FEET; THENCE SOUTH 0°00'00" WEST, A DISTANCE OF 4.50 FEET; THENCE NORTH 90°00'00" EAST, A DISTANCE OF 13.61 FEET; THENCE SOUTH 0°00'00" WEST, A DISTANCE OF 35.31 FEET; THENCE SOUTH 90°00'00" WEST, A DISTANCE OF 30.05 FEET; THENCE NORTH 0°00'00" EAST, A DISTANCE OF 4.89 FEET; THENCE NORTH 90°00'00" EAST, A DISTANCE OF 1.35 FEET; THENCE NORTH 0°00'00" EAST, A DISTANCE OF 34.93 FEET TO THE POINT OF BEGINNING.

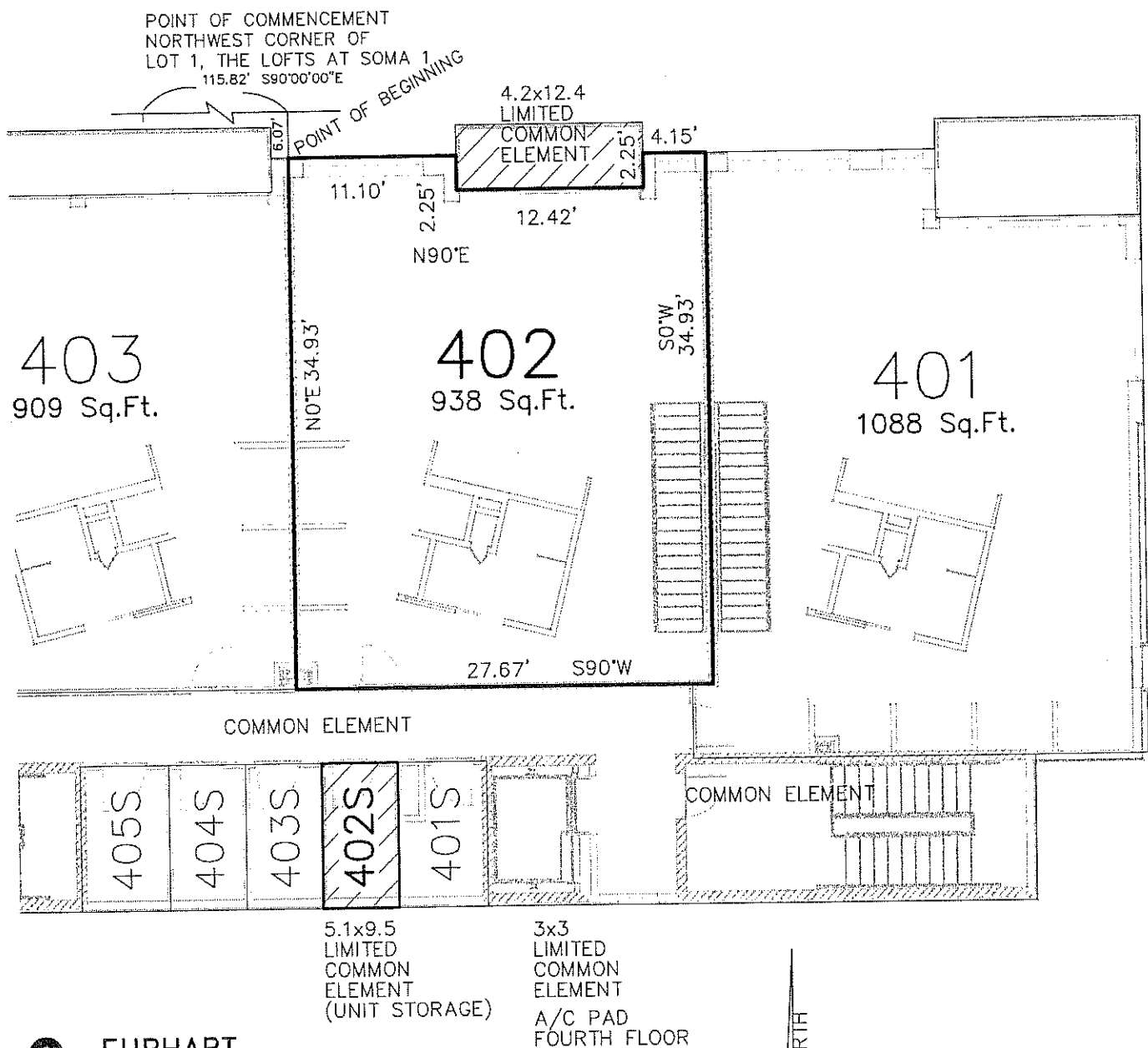
AND

A PORTION OF LOT 1, THE LOFTS AT SOMA 1, AS SURVEYED, PLATTED AND RECORDED IN DOUGLAS COUNTY, NEBRASKA, LYING ABOVE A HORIZONTAL PLANE SITUATED AT ELEVATION 46.95 FEET AND LYING BELOW A HORIZONTAL PLANE SITUATED AT ELEVATION 58.00 FEET, AND HORIZONTALLY BOUNDED AS FOLLOWS:

COMMENCE AT THE NORTHWEST CORNER OF LOT 1, THE LOFTS AT SOMA 1; THENCE SOUTH 90°00'00" EAST ALONG THE NORTH LINE OF SAID LOT 1, A DISTANCE OF 143.48 FEET; THENCE SOUTH 0°00'00" EAST, A DISTANCE OF 24.40 FEET TO THE POINT OF BEGINNING; THENCE NORTH 90°00'00" EAST, A DISTANCE OF 28.69 FEET; THENCE SOUTH 0°00'00" WEST, A DISTANCE OF 21.48 FEET; THENCE SOUTH 90°00'00" WEST, A DISTANCE OF 28.69 FEET; THENCE NORTH 0°00'00" EAST, A DISTANCE OF 21.48 FEET TO THE POINT OF BEGINNING.

FOURTH FLOOR

UNIT 402

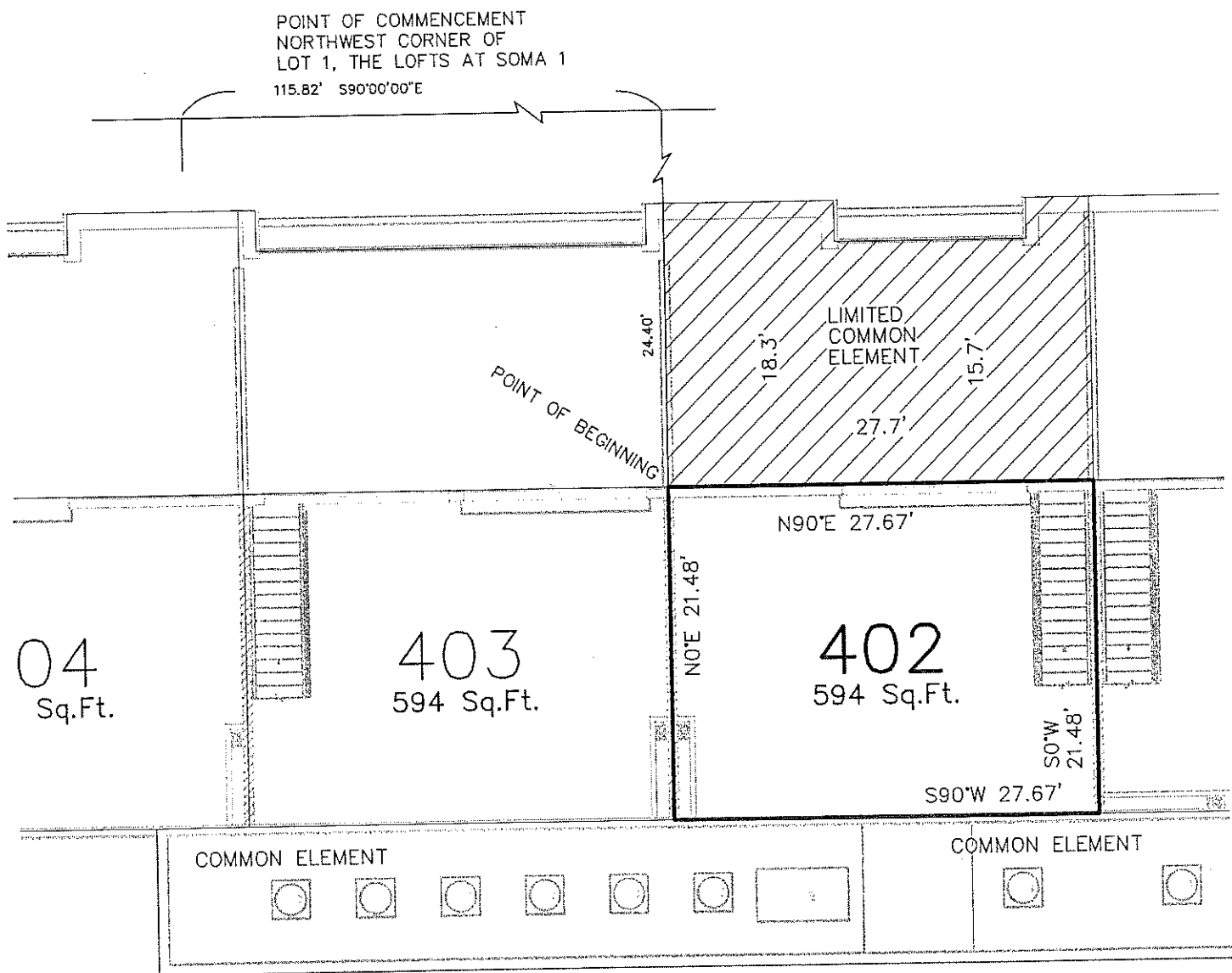


**EHRHART
GRIFFIN &
ASSOCIATES**

3552 Farnam Street -- Omaha, Nebraska 68131 -- (402) 551-0631
ENGINEERING -- PLANNING -- LAND SURVEYING

FIFTH FLOOR

UNIT 402



**EHRHART
GRIFFIN &
ASSOCIATES**

3552 Farnam Street -- Omaha, Nebraska 68131 -- (402) 551-0631
ENGINEERING -- PLANNING -- LAND SURVEYING

NORTH

LEGAL DESCRIPTION: UNIT 402, THE LOFTS AT SOMA 1, A CONDOMINIUM

A PORTION OF LOT 1, THE LOFTS AT SOMA 1, AS SURVEYED, PLATTED AND RECORDED IN DOUGLAS COUNTY, NEBRASKA, LYING ABOVE A HORIZONTAL PLANE SITUATED AT ELEVATION 34.95 FEET AND LYING BELOW A HORIZONTAL PLANE SITUATED AT ELEVATION 46.95 FEET, AND HORIZONTALLY BOUNDED AS FOLLOWS:

COMMENCE AT THE NORTHWEST CORNER OF LOT 1, THE LOFTS AT SOMA 1; THENCE SOUTH 90°00'00" EAST ALONG THE NORTH LINE OF SAID LOT 1, A DISTANCE OF 115.82 FEET; THENCE SOUTH 0°00'00" EAST, A DISTANCE OF 6.07 FEET TO THE POINT OF BEGINNING; THENCE NORTH 90°00'00" EAST, A DISTANCE OF 11.10 FEET; THENCE SOUTH 0°00'00" WEST, A DISTANCE OF 2.25 FEET; THENCE NORTH 90°00'00" EAST, A DISTANCE OF 12.42 FEET; THENCE NORTH 0°00'00" EAST, A DISTANCE OF 2.25 FEET; THENCE NORTH 90°00'00" EAST, A DISTANCE OF 4.15 FEET; THENCE SOUTH 0°00'00" WEST, A DISTANCE OF 34.93 FEET; THENCE SOUTH 90°00'00" WEST, A DISTANCE OF 27.67 FEET; THENCE NORTH 0°00'00" EAST, A DISTANCE OF 34.93 FEET TO THE POINT OF BEGINNING.

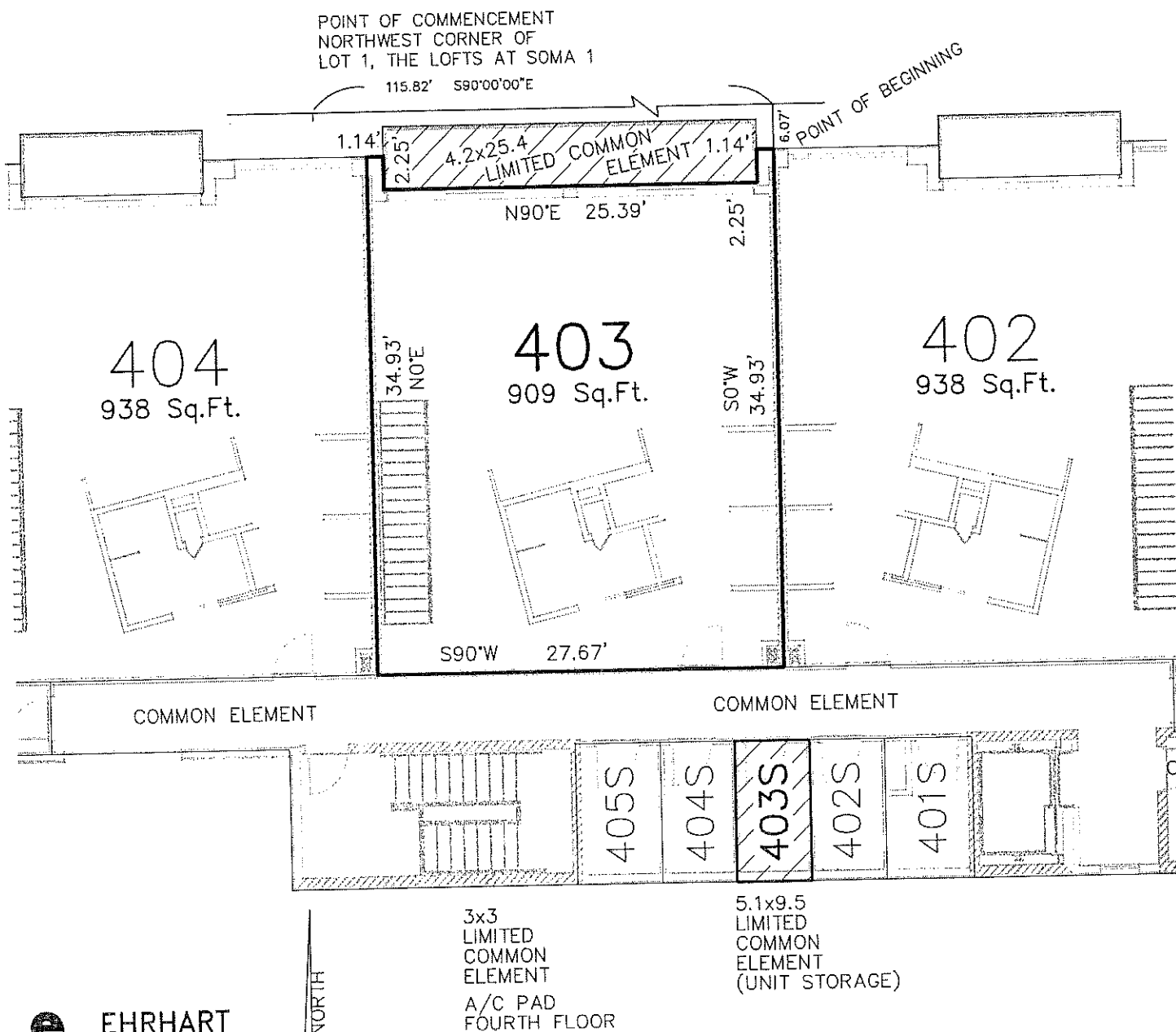
AND

A PORTION OF LOT 1, THE LOFTS AT SOMA 1, AS SURVEYED, PLATTED AND RECORDED IN DOUGLAS COUNTY, NEBRASKA, LYING ABOVE A HORIZONTAL PLANE SITUATED AT ELEVATION 46.95 FEET AND LYING BELOW A HORIZONTAL PLANE SITUATED AT ELEVATION 58.00 FEET, AND HORIZONTALLY BOUNDED AS FOLLOWS:

COMMENCE AT THE NORTHWEST CORNER OF LOT 1, THE LOFTS AT SOMA 1; THENCE SOUTH 90°00'00" EAST ALONG THE NORTH LINE OF SAID LOT 1, A DISTANCE OF 115.82 FEET; THENCE SOUTH 0°00'00" EAST, A DISTANCE OF 24.40 FEET TO THE POINT OF BEGINNING; THENCE NORTH 90°00'00" EAST, A DISTANCE OF 27.67 FEET; THENCE SOUTH 0°00'00" WEST, A DISTANCE OF 21.48 FEET; THENCE SOUTH 90°00'00" WEST, A DISTANCE OF 27.67 FEET; THENCE NORTH 0°00'00" EAST, A DISTANCE OF 21.48 FEET TO THE POINT OF BEGINNING.

FOURTH FLOOR

UNIT 403

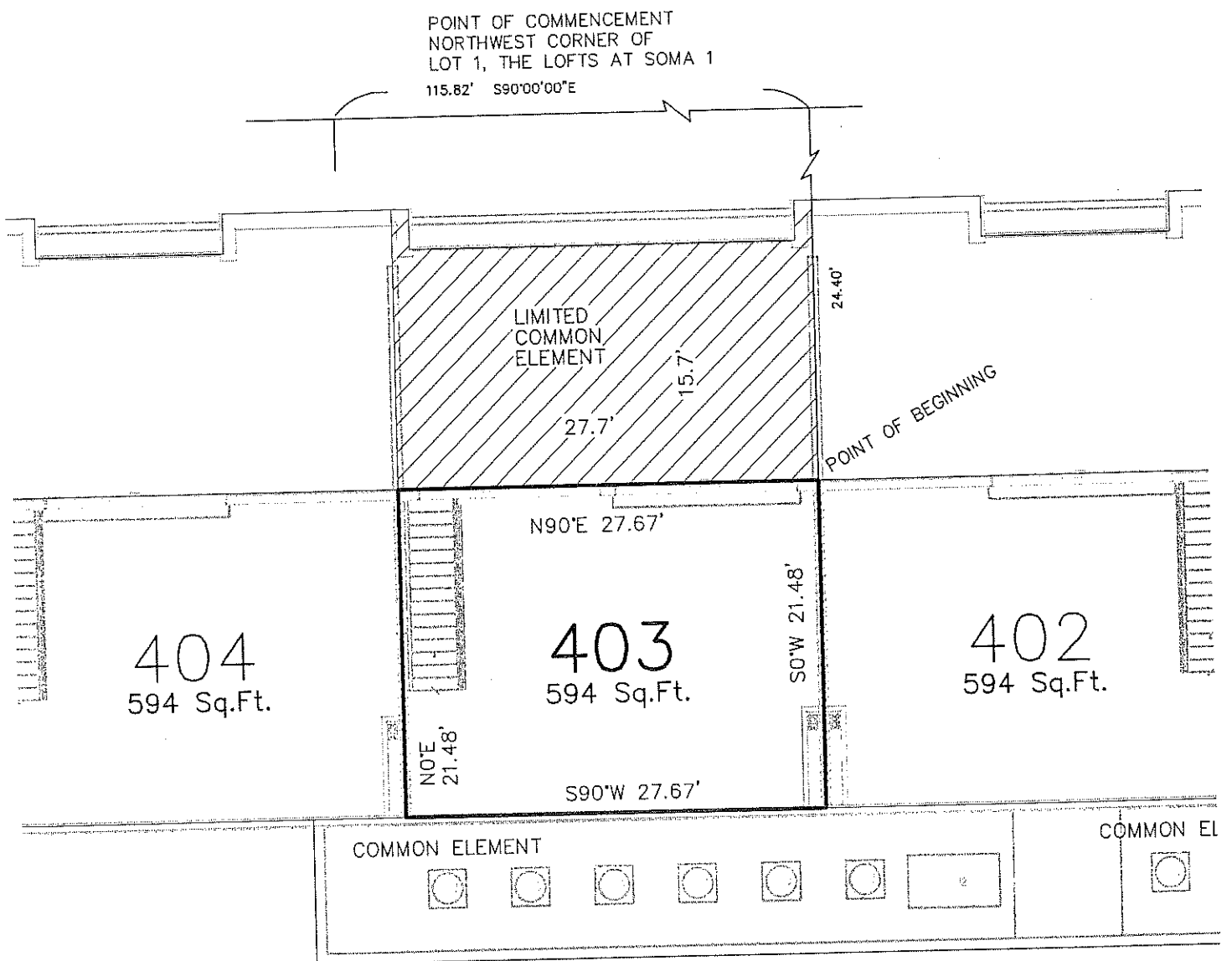


**EHRHART
GRIFFIN &
ASSOCIATES**

3552 Farnam Street -- Omaha, Nebraska 68131 -- (402) 551-0631
ENGINEERING -- PLANNING -- LAND SURVEYING

FIFTH FLOOR

UNIT 403



**EHRHART
GRIFFIN &
ASSOCIATES**

3552 Farnam Street -- Omaha, Nebraska 68131 -- (402) 551-0631
ENGINEERING -- PLANNING -- LAND SURVEYING

LEGAL DESCRIPTION: UNIT 403, THE LOFTS AT SOMA 1, A CONDOMINIUM

A PORTION OF LOT 1, THE LOFTS AT SOMA 1, AS SURVEYED, PLATTED AND RECORDED IN DOUGLAS COUNTY, NEBRASKA, LYING ABOVE A HORIZONTAL PLANE SITUATED AT ELEVATION 34.95 FEET AND LYING BELOW A HORIZONTAL PLANE SITUATED AT ELEVATION 46.95 FEET, AND HORIZONTALLY BOUNDED AS FOLLOWS:

COMMENCE AT THE NORTHWEST CORNER OF LOT 1, THE LOFTS AT SOMA 1; THENCE SOUTH 90°00'00" EAST ALONG THE NORTH LINE OF SAID LOT 1, A DISTANCE OF 115.82 FEET; THENCE SOUTH 0°00'00" EAST, A DISTANCE OF 6.07 FEET TO THE POINT OF BEGINNING; THENCE CONTINUE SOUTH 0°00'00" WEST, A DISTANCE OF 34.93 FEET; THENCE SOUTH 90°00'00" WEST, A DISTANCE OF 27.67 FEET; THENCE NORTH 0°00'00" EAST, A DISTANCE OF 34.93 FEET; THENCE NORTH 90°00'00" EAST, A DISTANCE OF 1.14 FEET; THENCE SOUTH 0°00'00" WEST, A DISTANCE OF 2.25 FEET; THENCE NORTH 90°00'00" EAST, A DISTANCE OF 25.39 FEET; THENCE NORTH 0°00'00" EAST, A DISTANCE OF 2.25 FEET; THENCE NORTH 90°00'00" EAST, A DISTANCE OF 1.14 FEET TO THE POINT OF BEGINNING.

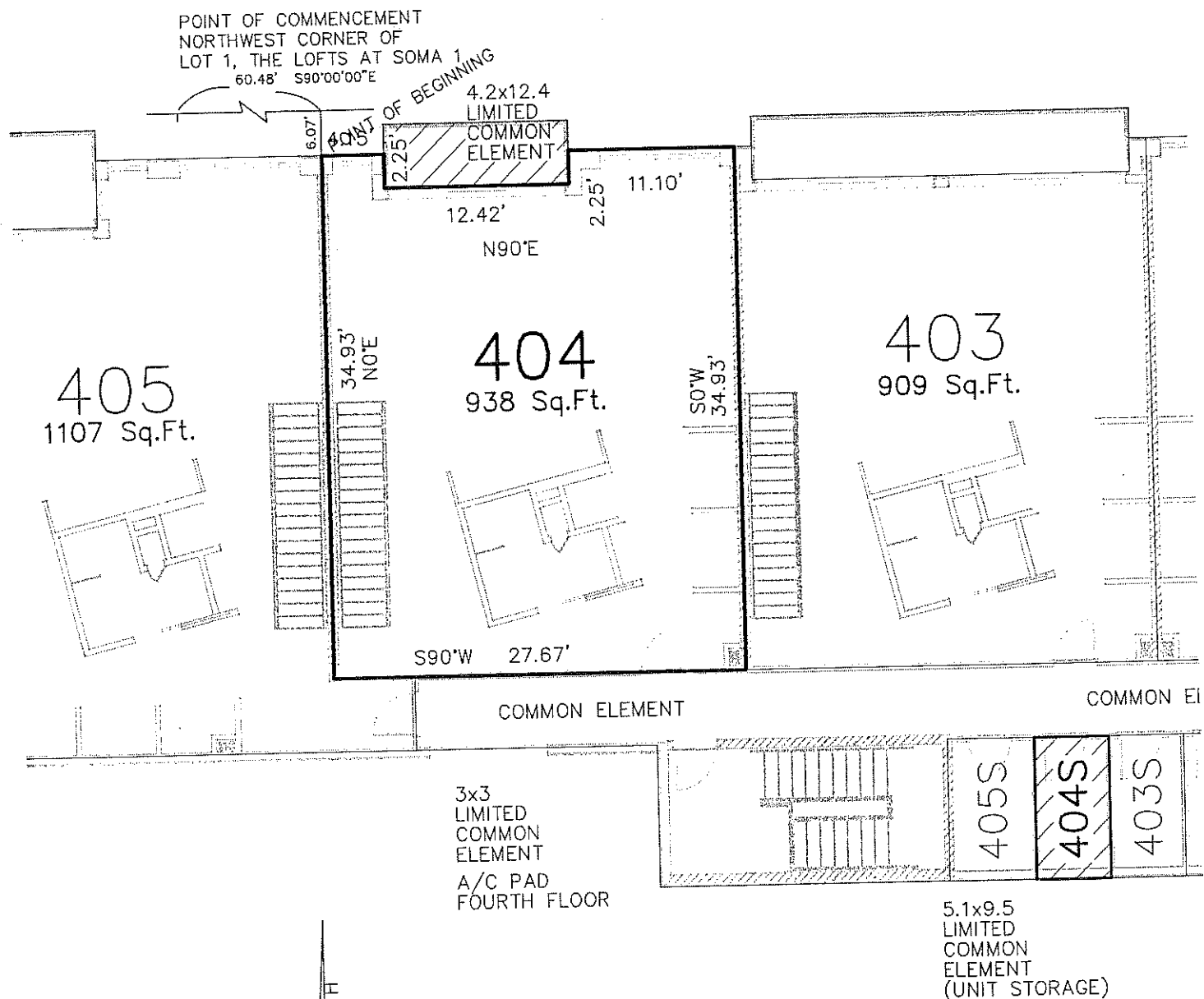
AND

A PORTION OF LOT 1, THE LOFTS AT SOMA 1, AS SURVEYED, PLATTED AND RECORDED IN DOUGLAS COUNTY, NEBRASKA, LYING ABOVE A HORIZONTAL PLANE SITUATED AT ELEVATION 46.95 FEET AND LYING BELOW A HORIZONTAL PLANE SITUATED AT ELEVATION 58.00 FEET, AND HORIZONTALLY BOUNDED AS FOLLOWS:

COMMENCE AT THE NORTHWEST CORNER OF LOT 1, THE LOFTS AT SOMA 1; THENCE SOUTH 90°00'00" EAST ALONG THE NORTH LINE OF SAID LOT 1, A DISTANCE OF 115.82 FEET; THENCE SOUTH 0°00'00" WEST, A DISTANCE OF 24.40 FEET TO THE POINT OF BEGINNING; THENCE CONTINUE SOUTH 0°00'00" WEST, A DISTANCE OF 21.48 FEET; THENCE SOUTH 90°00'00" WEST, A DISTANCE OF 27.67 FEET; THENCE NORTH 0°00'00" EAST, A DISTANCE OF 21.48 FEET; THENCE NORTH 90°00'00" EAST, A DISTANCE OF 27.67 FEET TO THE POINT OF BEGINNING.

FOURTH FLOOR

UNIT 404

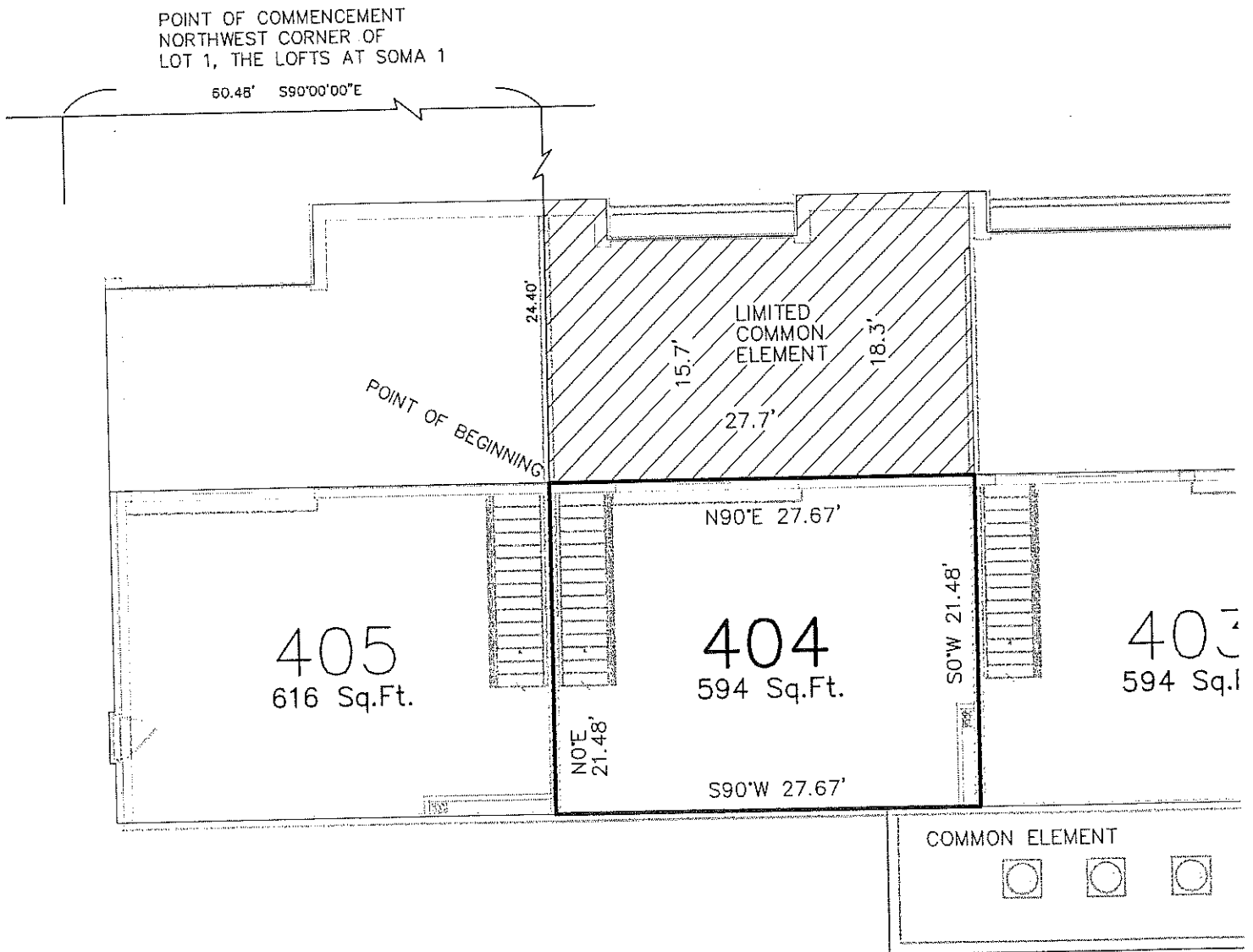


**EHRHART
GRIFFIN &
ASSOCIATES**

3552 Farnam Street -- Omaha, Nebraska 68131 -- (402) 551-0631
ENGINEERING -- PLANNING -- LAND SURVEYING

FIFTH FLOOR

UNIT 404



**EHRHART
GRIFFIN &
ASSOCIATES**

3552 Farnam Street --- Omaha, Nebraska 68131 --- (402) 551-0631
ENGINEERING --- PLANNING --- LAND SURVEYING

NORTH

LEGAL DESCRIPTION: UNIT 404, THE LOFTS AT SOMA 1, A CONDOMINIUM

A PORTION OF LOT 1, THE LOFTS AT SOMA 1, AS SURVEYED, PLATTED AND RECORDED IN DOUGLAS COUNTY, NEBRASKA, LYING ABOVE A HORIZONTAL PLANE SITUATED AT ELEVATION 34.95 FEET AND LYING BELOW A HORIZONTAL PLANE SITUATED AT ELEVATION 46.95 FEET, AND HORIZONTALLY BOUNDED AS FOLLOWS:

COMMENCE AT THE NORTHWEST CORNER OF LOT 1, THE LOFTS AT SOMA 1; THENCE SOUTH 90°00'00" EAST ALONG THE NORTH LINE OF SAID LOT 1, A DISTANCE OF 60.48 FEET; THENCE SOUTH 0°00'00" EAST, A DISTANCE OF 6.07 FEET TO THE POINT OF BEGINNING; THENCE NORTH 90°00'00" EAST, A DISTANCE OF 4.15 FEET; THENCE SOUTH 0°00'00" WEST, A DISTANCE OF 2.25 FEET; THENCE NORTH 90°00'00" EAST, A DISTANCE OF 12.42 FEET; THENCE NORTH 0°00'00" EAST, A DISTANCE OF 2.25 FEET; THENCE NORTH 90°00'00" EAST, A DISTANCE OF 11.10 FEET; THENCE SOUTH 0°00'00" WEST, A DISTANCE OF 34.93 FEET; THENCE SOUTH 90°00'00" WEST, A DISTANCE OF 27.67 FEET; THENCE NORTH 0°00'00" EAST, A DISTANCE OF 34.93 FEET TO THE POINT OF BEGINNING.

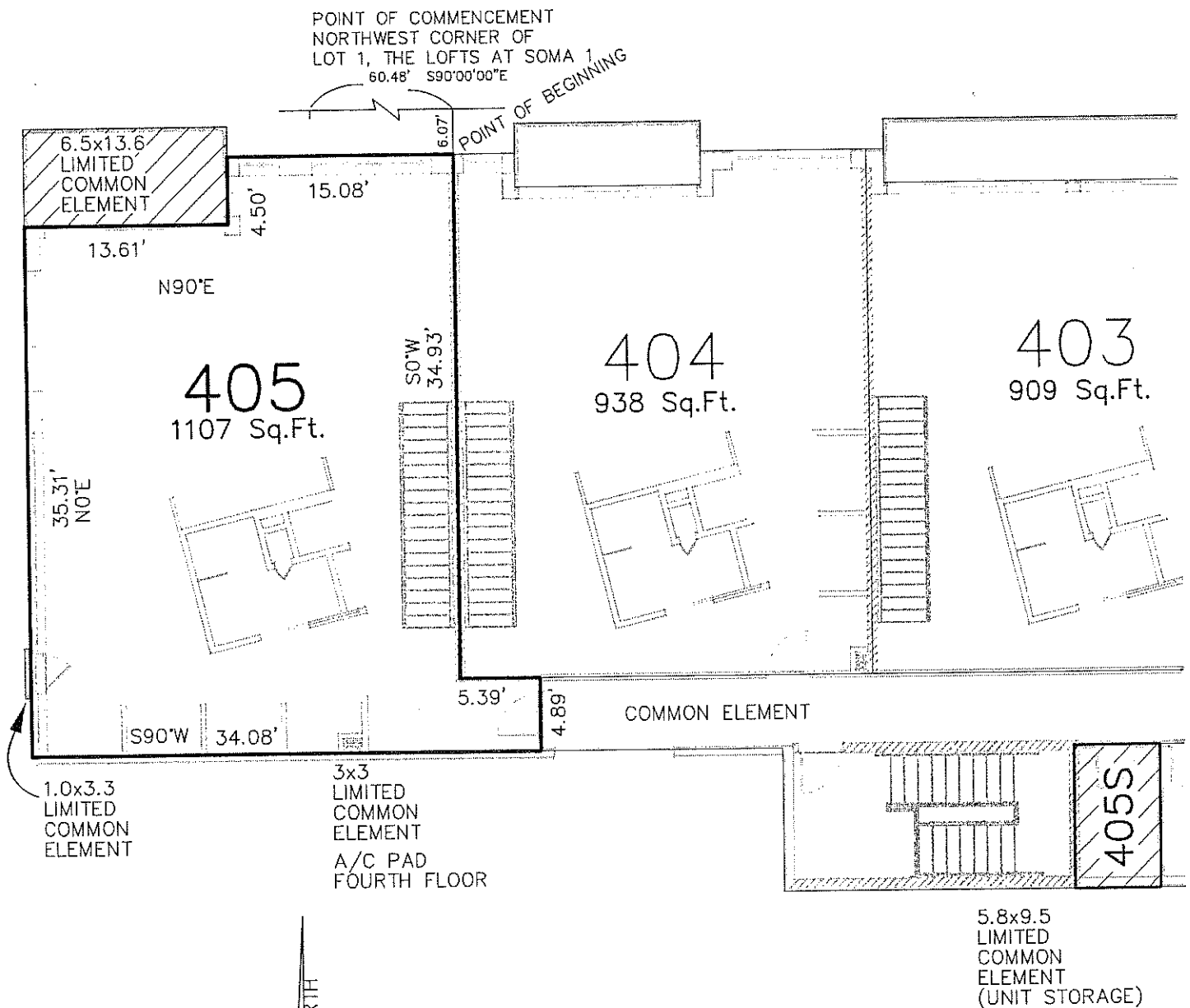
AND

A PORTION OF LOT 1, THE LOFTS AT SOMA 1, AS SURVEYED, PLATTED AND RECORDED IN DOUGLAS COUNTY, NEBRASKA, LYING ABOVE A HORIZONTAL PLANE SITUATED AT ELEVATION 46.95 FEET AND LYING BELOW A HORIZONTAL PLANE SITUATED AT ELEVATION 58.00 FEET, AND HORIZONTALLY BOUNDED AS FOLLOWS:

COMMENCE AT THE NORTHWEST CORNER OF LOT 1, THE LOFTS AT SOMA 1; THENCE SOUTH 90°00'00" EAST ALONG THE NORTH LINE OF SAID LOT 1, A DISTANCE OF 60.48 FEET; THENCE SOUTH 0°00'00" EAST, A DISTANCE OF 24.40 FEET TO THE POINT OF BEGINNING; THENCE NORTH 90°00'00" EAST, A DISTANCE OF 27.67 FEET; THENCE SOUTH 0°00'00" WEST, A DISTANCE OF 21.48 FEET; THENCE SOUTH 90°00'00" WEST, A DISTANCE OF 27.67 FEET; THENCE NORTH 0°00'00" EAST, A DISTANCE OF 21.48 FEET TO THE POINT OF BEGINNING

FOURTH FLOOR

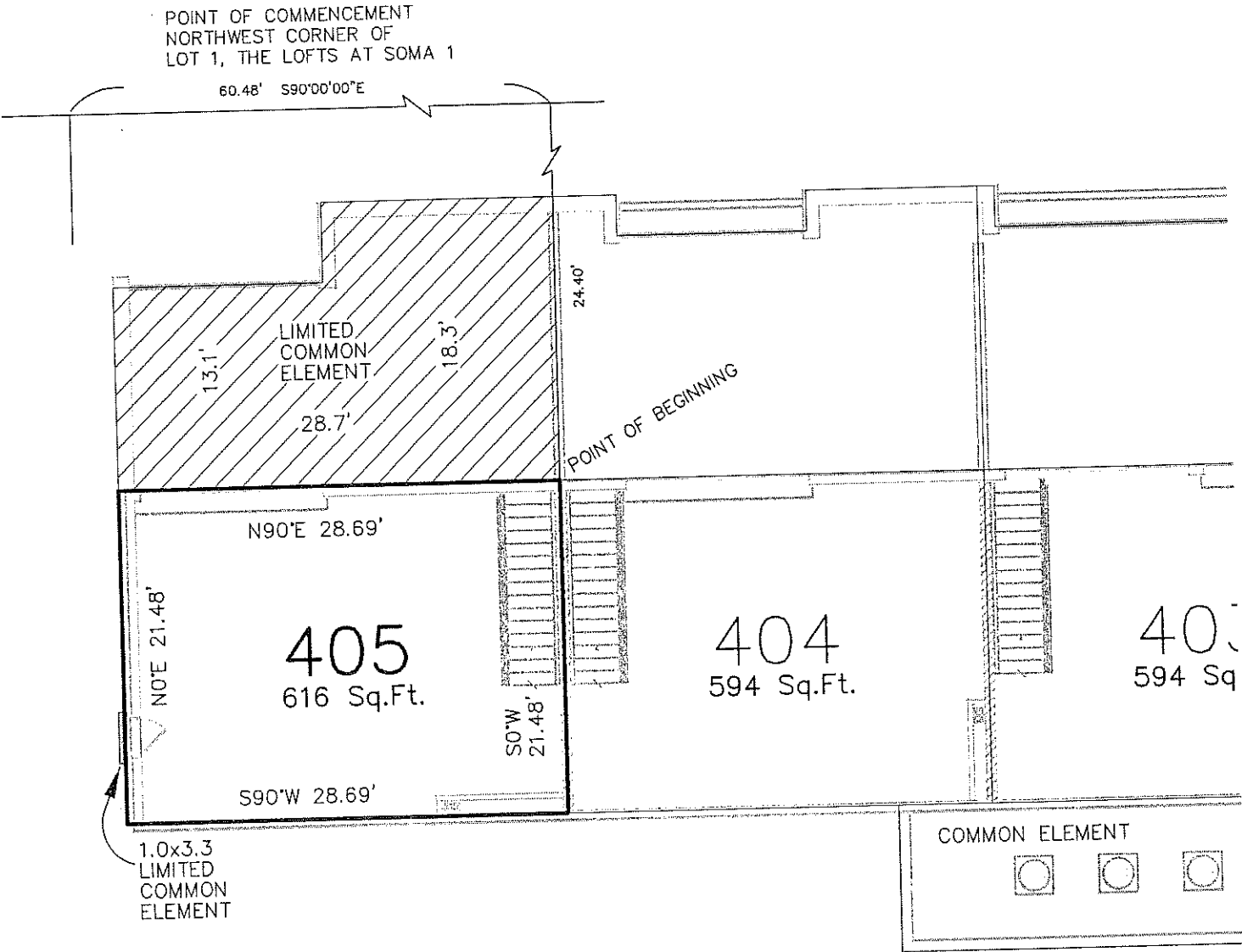
UNIT 405



**EHRHART
GRIFFIN &
ASSOCIATES**

3552 Farnam Street -- Omaha, Nebraska 68131 -- (402) 551-0631
ENGINEERING -- PLANNING -- LAND SURVEYING

FIFTH FLOOR
UNIT 405



EHRHART
GRIFFIN &
ASSOCIATES

3552 Farnam Street -- Omaha, Nebraska 68131 -- (402) 551-0631
ENGINEERING -- PLANNING -- LAND SURVEYING

NORTH

LEGAL DESCRIPTION: UNIT 405, THE LOFTS AT SOMA 1, A CONDOMINIUM

A PORTION OF LOT 1, THE LOFTS AT SOMA 1, AS SURVEYED, PLATTED AND RECORDED IN DOUGLAS COUNTY, NEBRASKA, LYING ABOVE A HORIZONTAL PLANE SITUATED AT ELEVATION 34.95 FEET AND LYING BELOW A HORIZONTAL PLANE SITUATED AT ELEVATION 46.95 FEET, AND HORIZONTALLY BOUNDED AS FOLLOWS:

COMMENCE AT THE NORTHWEST CORNER OF LOT 1, THE LOFTS AT SOMA 1; THENCE SOUTH 90°00'00" EAST ALONG THE NORTH LINE OF SAID LOT 1, A DISTANCE OF 60.48 FEET; THENCE SOUTH 0°00'00" EAST, A DISTANCE OF 6.07 FEET TO THE POINT OF BEGINNING; THENCE CONTINUE SOUTH 0°00'00" WEST, A DISTANCE OF 34.93 FEET, THENCE NORTH 90°00'00" EAST, A DISTANCE OF 5.39 FEET; THENCE SOUTH 0°00'00" WEST, A DISTANCE OF 4.89 FEET; THENCE SOUTH 90°00'00" WEST, A DISTANCE OF 34.08 FEET; THENCE NORTH 90°00'00" EAST, A DISTANCE OF 35.31 FEET; THENCE NORTH 90°00'00" EAST, A DISTANCE OF 13.61 FEET; THENCE NORTH 0°00'00" EAST, A DISTANCE OF 4.50 FEET; THENCE NORTH 90°00'00" EAST, A DISTANCE OF 15.08 FEET TO THE POINT OF BEGINNING.

AND

A PORTION OF LOT 1, THE LOFTS AT SOMA 1, AS SURVEYED, PLATTED AND RECORDED IN DOUGLAS COUNTY, NEBRASKA, LYING ABOVE A HORIZONTAL PLANE SITUATED AT ELEVATION 46.95 FEET AND LYING BELOW A HORIZONTAL PLANE SITUATED AT ELEVATION 58.00 FEET, AND HORIZONTALLY BOUNDED AS FOLLOWS:

COMMENCE AT THE NORTHWEST CORNER OF LOT 1, THE LOFTS AT SOMA 1; THENCE SOUTH 90°00'00" EAST ALONG THE NORTH LINE OF SAID LOT 1, A DISTANCE OF 60.48 FEET; THENCE SOUTH 0°00'00" WEST, A DISTANCE OF 24.40 FEET TO THE POINT OF BEGINNING; THENCE CONTINUE SOUTH 00°00'00" WEST, A DISTANCE OF 21.48 FEET; THENCE SOUTH 90°00'00" WEST, A DISTANCE OF 28.69 FEET; THENCE NORTH 0°00'00" EAST, A DISTANCE OF 21.48 FEET; THENCE NORTH 90°00'00" EAST, A DISTANCE OF 28.69 FEET TO THE POINT OF BEGINNING.