

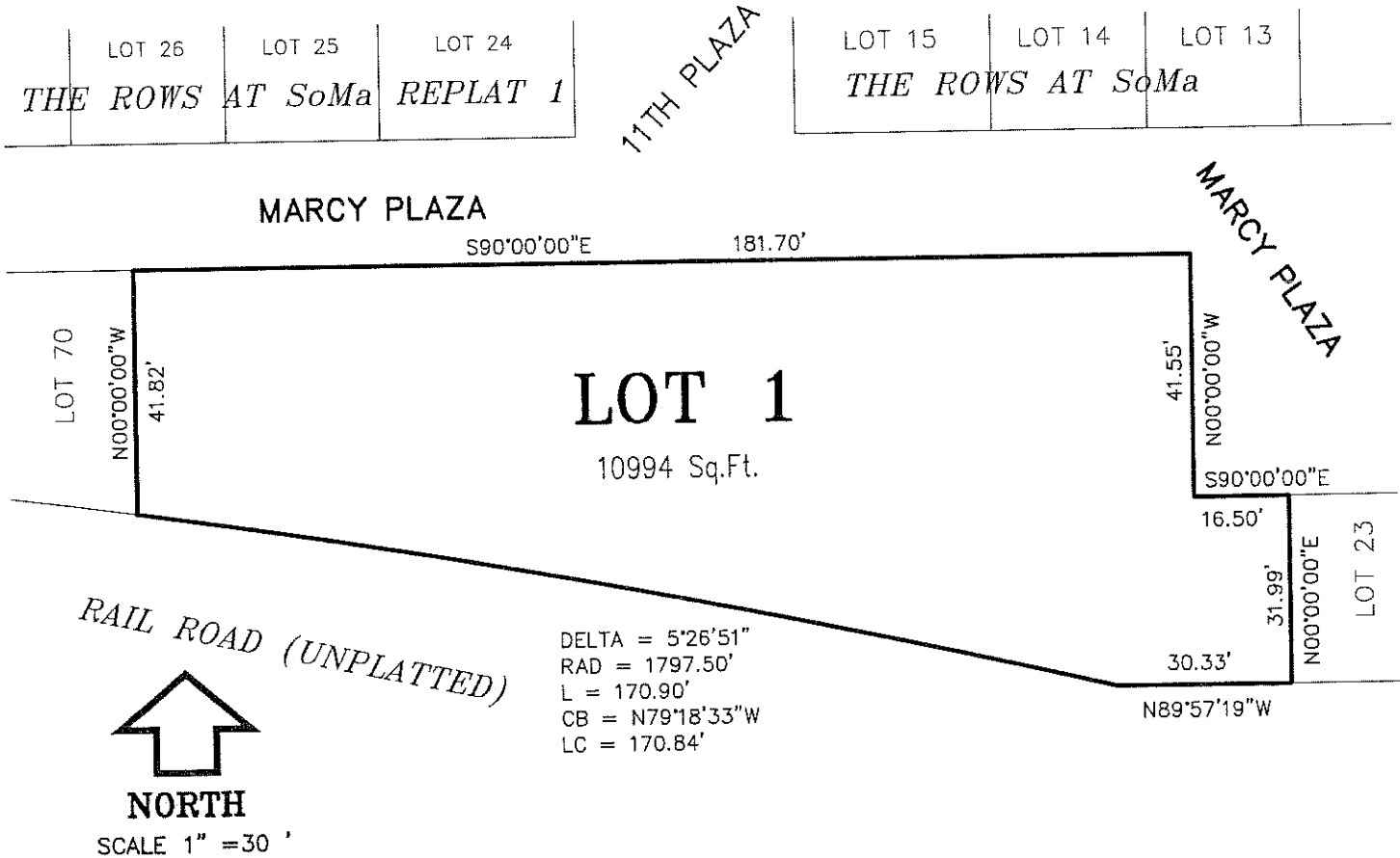
Exhibit "B"

THE LOFTS AT SOMA 1

A CONDOMINIUM

LEGAL DESCRIPTION: CONDOMINIUM BOUNDARY

LOT 1, THE LOFTS AT SOMA 1, BEING A REPLAT OF OUTLOT "C", THE ROWS AT SOMA REPLAT 1, AS SURVEYED, PLATTED AND RECORDED IN DOUGLAS COUNTY, NEBRASKA.



**EHRHART
GRIFFIN &
ASSOCIATES**

ENGINEERING

PLANNING

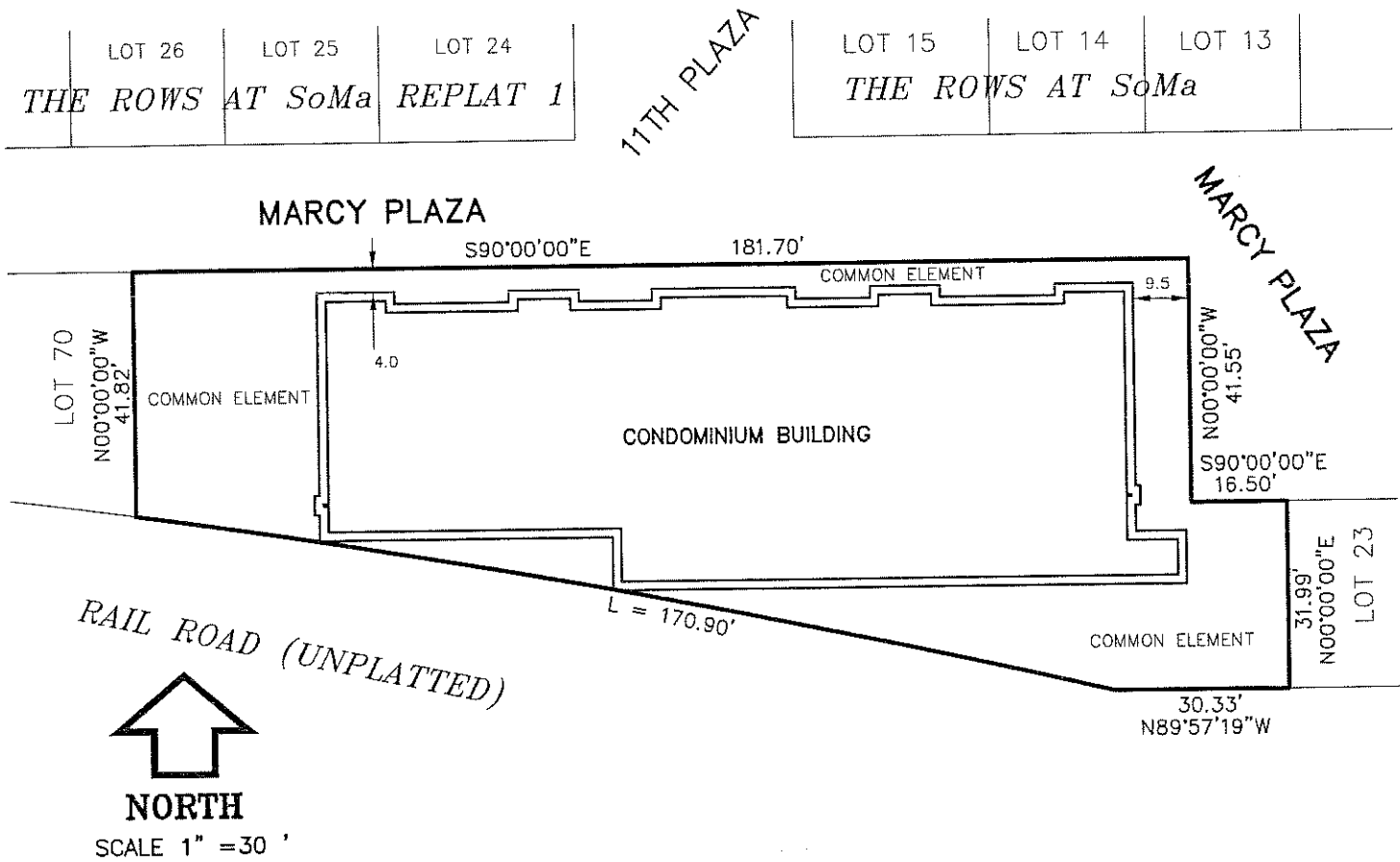
LAND SURVEYING

3552 Farnam Street • Omaha, Nebraska 68131 • 402 / 551-0631

THE LOFTS AT SOMA 1

A CONDOMINIUM

STRUCTURE LOCATION

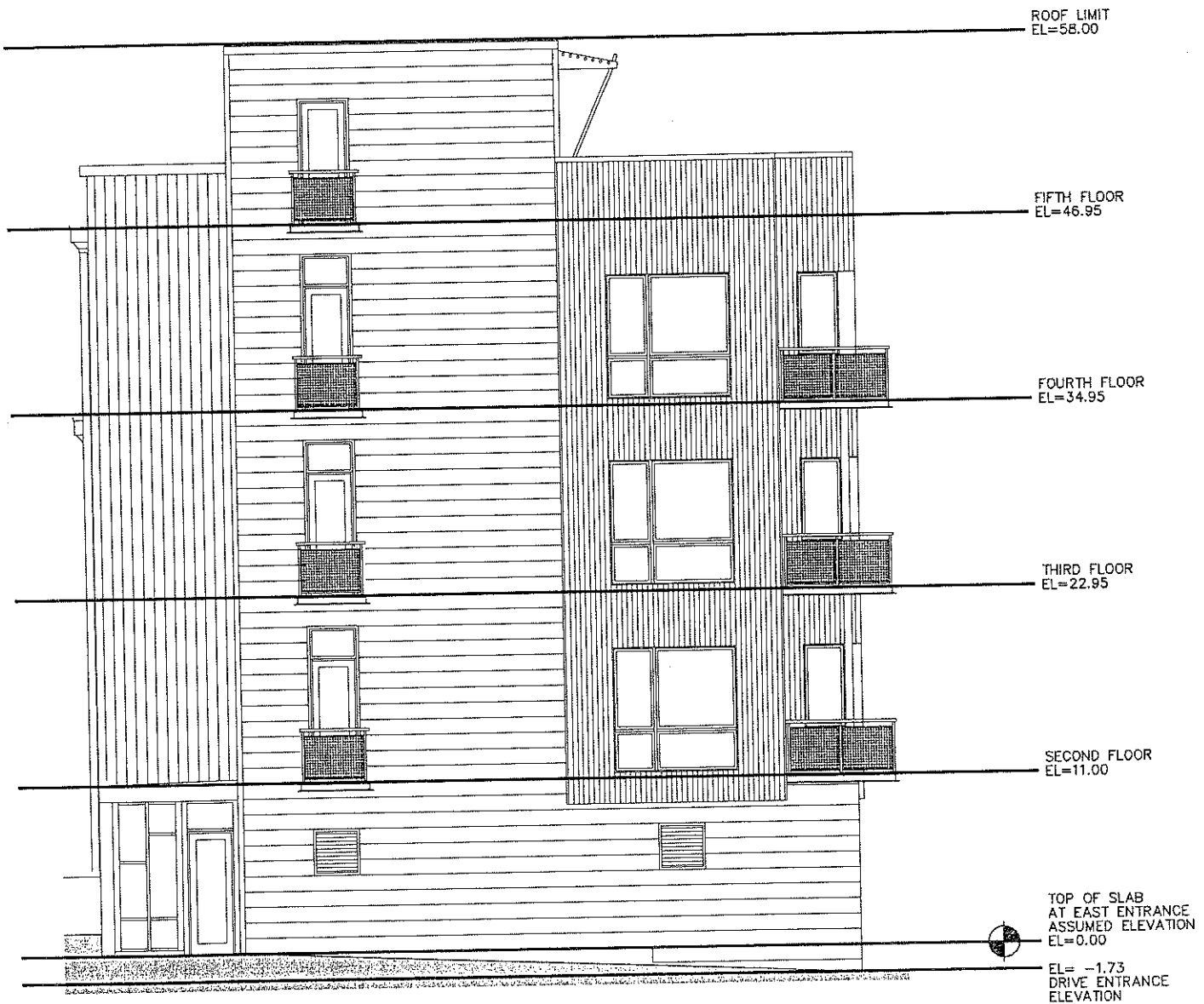


**EHRHART
GRIFFIN &
ASSOCIATES**

ENGINEERING PLANNING LAND SURVEYING
3552 Farnam Street • Omaha, Nebraska 68131 • 402 / 551-0631

SIDE VIEW

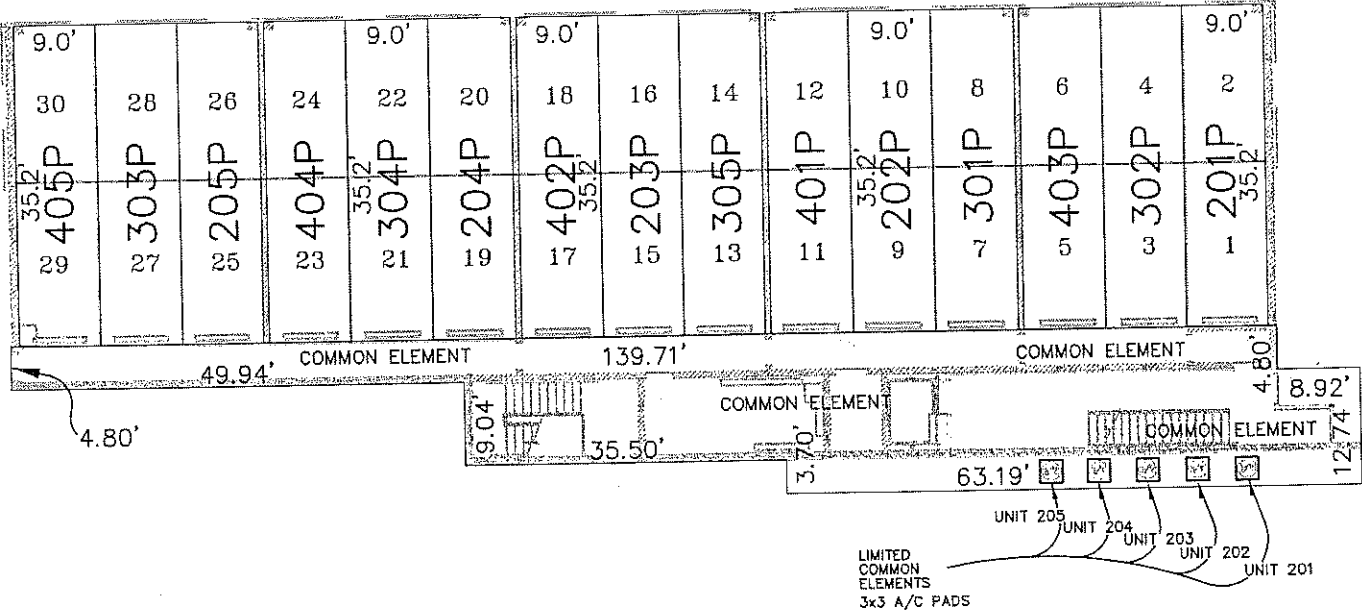
VERTICAL BOUNDARY FLOOR REFERENCE
FOR ALL LEGAL DESCRIPTIONS



EHRHART
GRIFFIN &
ASSOCIATES

3552 Farnam Street -- Omaha, Nebraska 68131 -- (402) 551-0631
ENGINEERING -- PLANNING -- LAND SURVEYING

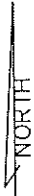
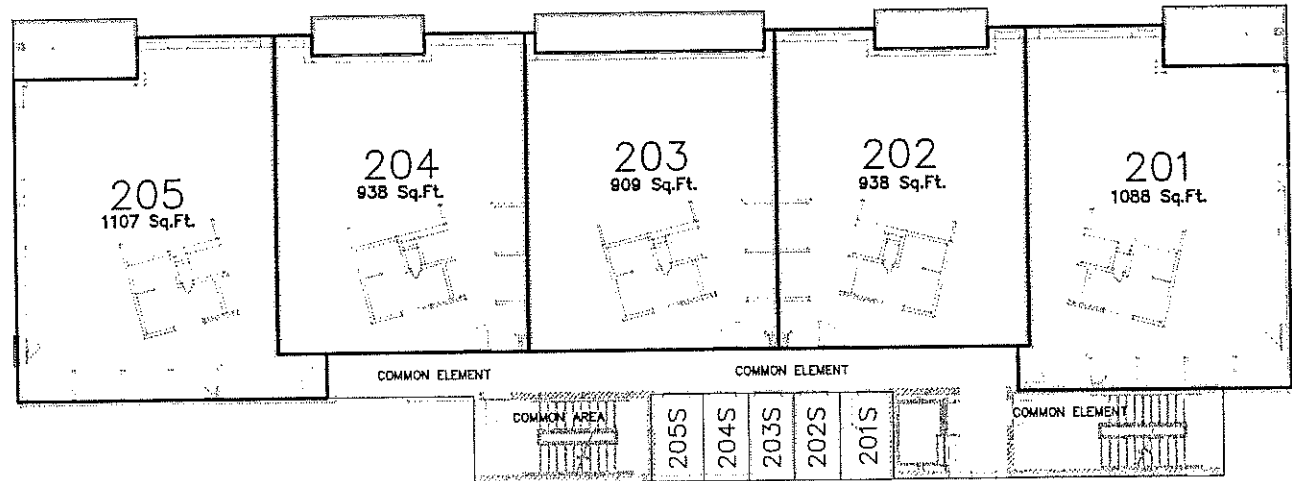
FIRST FLOOR LAYOUT



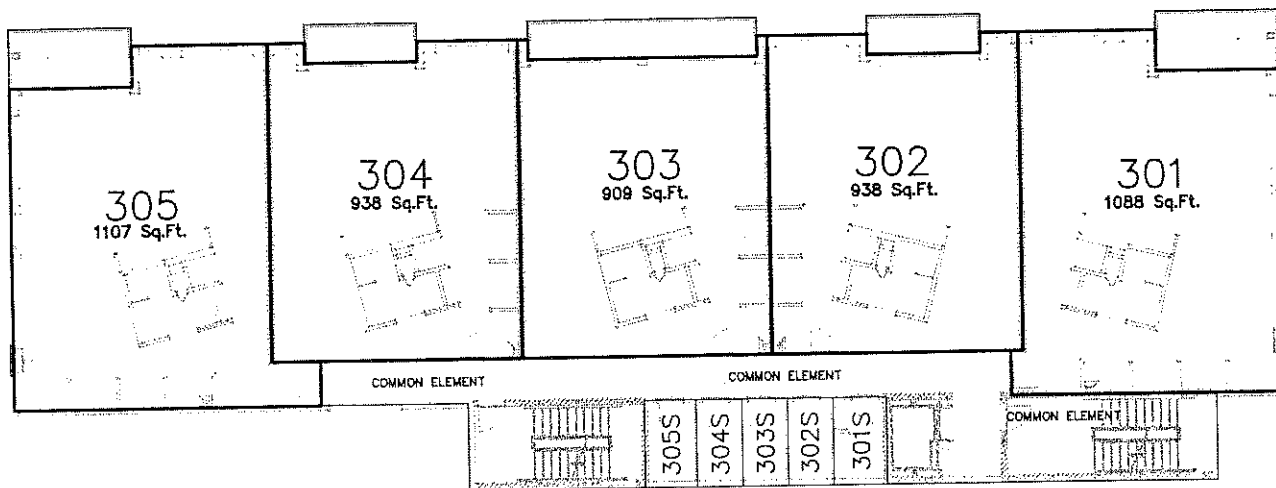
**EHRHART
GRIFFIN &
ASSOCIATES**

3552 Farnam Street -- Omaha, Nebraska 68131 -- (402) 551-0631
ENGINEERING -- PLANNING -- LAND SURVEYING

SECOND FLOOR LAYOUT



THIRD FLOOR LAYOUT



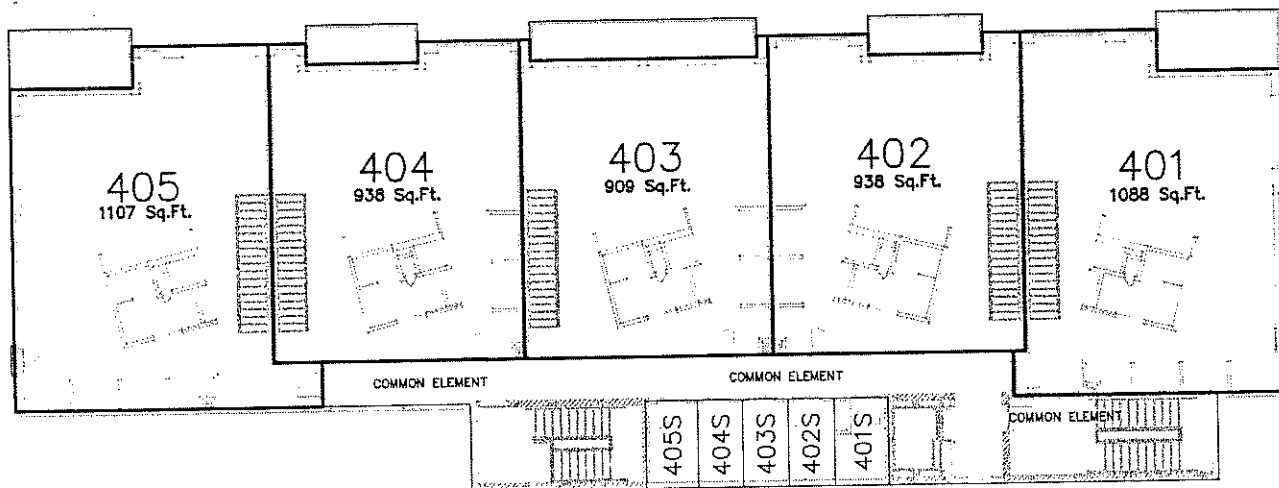
NORTH



EHRHART
GRIFFIN &
ASSOCIATES

3552 Farnam Street -- Omaha, Nebraska 68131 -- (402) 551-0631
ENGINEERING -- PLANNING -- LAND SURVEYING

FOURTH FLOOR LAYOUT



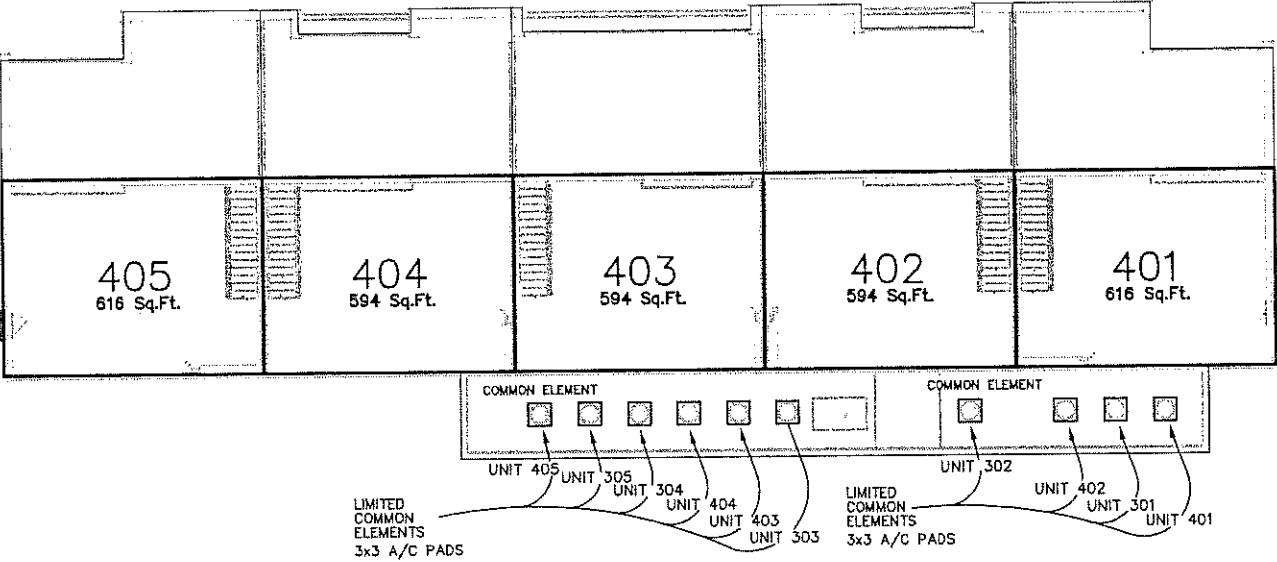
NORTH



**EHRHART
GRIFFIN &
ASSOCIATES**

3552 Farnam Street -- Omaha, Nebraska 68131 -- (402) 551-0631
ENGINEERING -- PLANNING -- LAND SURVEYING

FIFTH FLOOR LAYOUT



NORTH

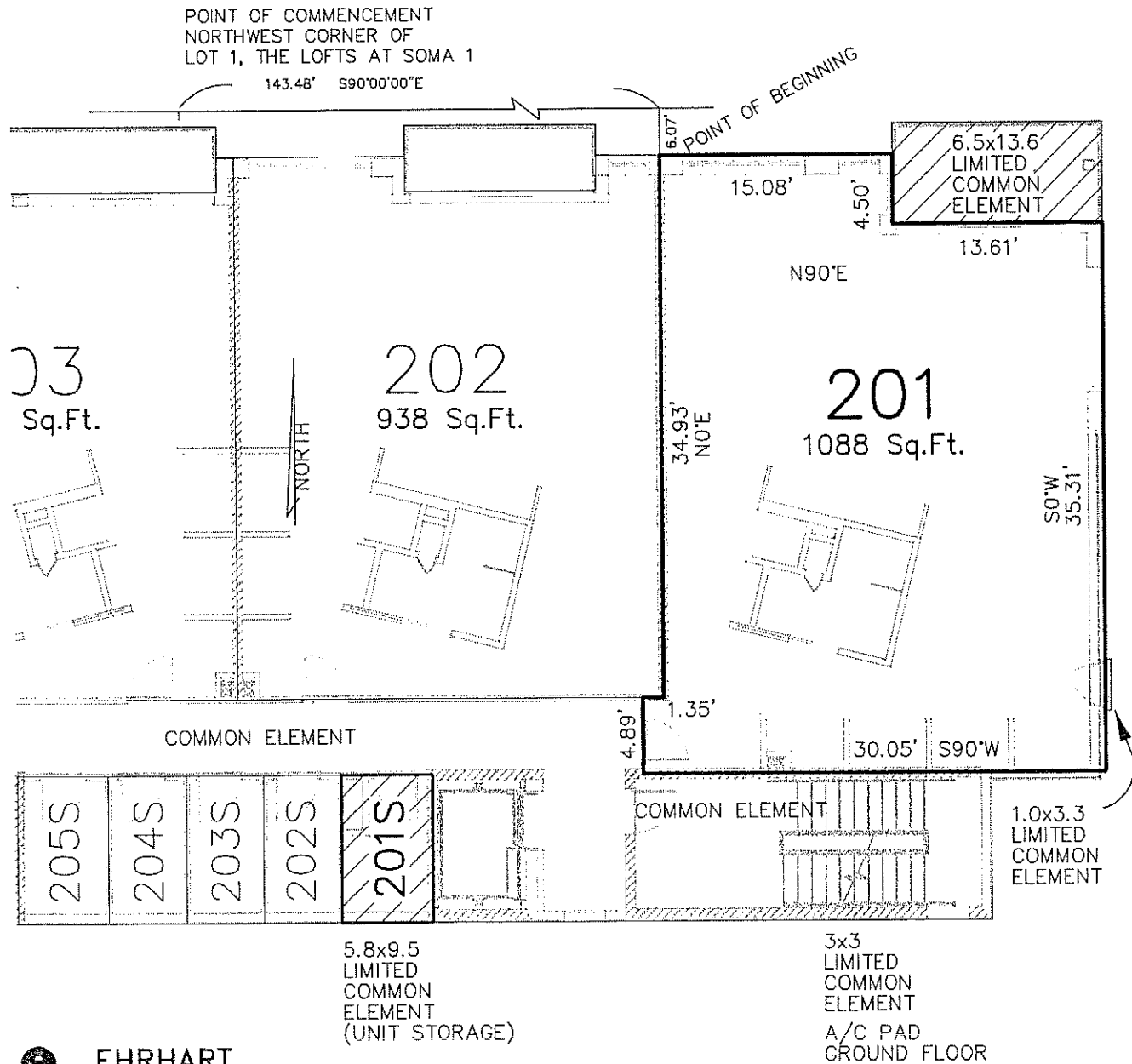


**EHRHART
GRIFFIN &
ASSOCIATES**

3552 Farnam Street -- Omaha, Nebraska 68131 -- (402) 551-0631
ENGINEERING -- PLANNING -- LAND SURVEYING

SECOND FLOOR

UNIT 201



**EHRHART
GRIFFIN &
ASSOCIATES**

3552 Farnam Street -- Omaha, Nebraska 68131 -- (402) 551-0631
ENGINEERING -- PLANNING -- LAND SURVEYING

201

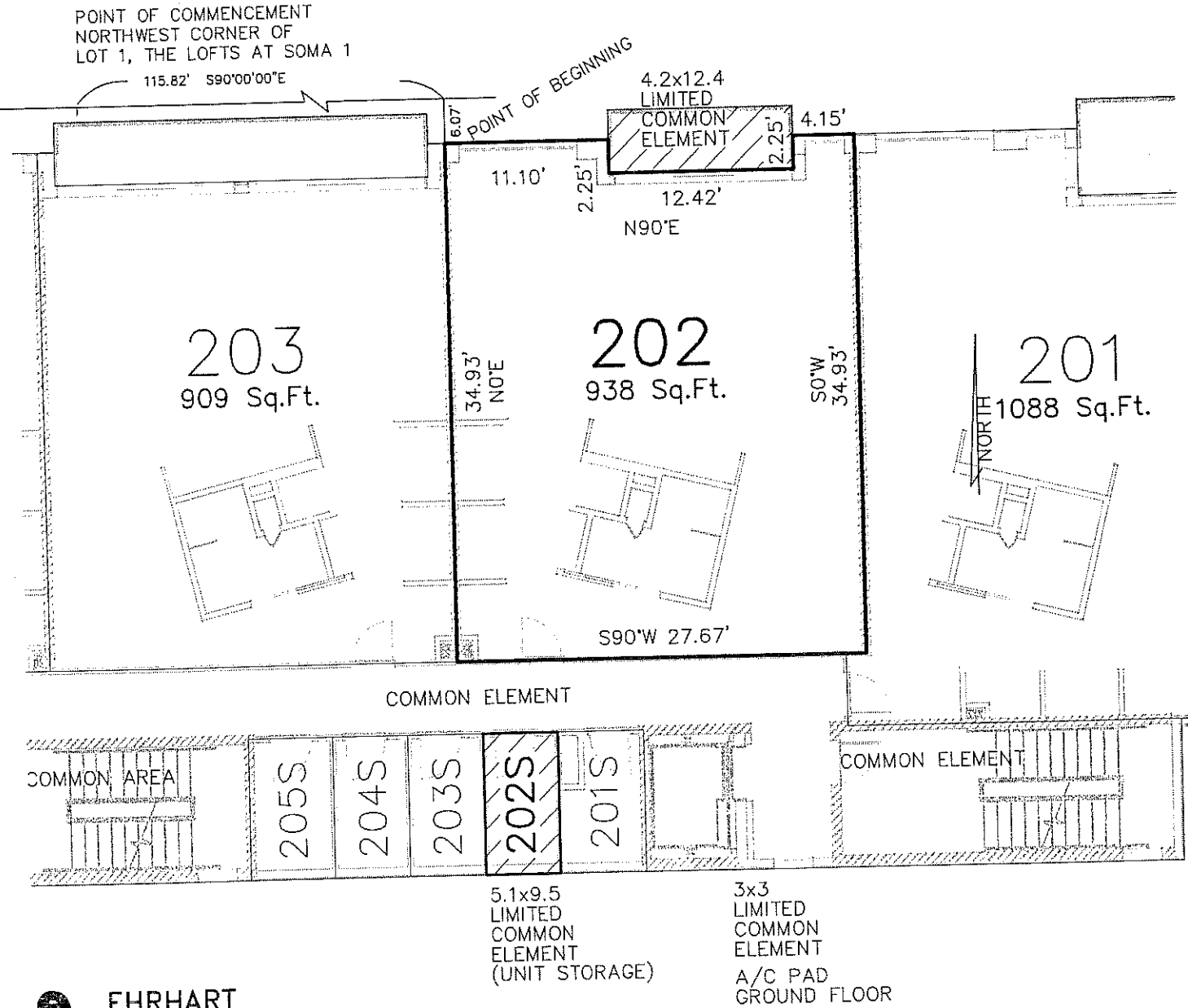
LEGAL DESCRIPTION: UNIT 201, THE LOFTS AT SOMA 1, A CONDOMINIUM

A PORTION OF LOT 1, THE LOFTS AT SOMA 1, AS SURVEYED, PLATTED AND RECORDED IN DOUGLAS COUNTY, NEBRASKA, LYING ABOVE A HORIZONTAL PLANE SITUATED AT ELEVATION 11.00 FEET AND LYING BELOW A HORIZONTAL PLANE SITUATED AT ELEVATION 22.95 FEET, AND HORIZONTALLY BOUNDED AS FOLLOWS:

COMMENCE AT THE NORTHWEST CORNER OF LOT 1, THE LOFTS AT SOMA 1; THENCE SOUTH 90°00'00" EAST ALONG THE NORTH LINE OF SAID LOT 1, A DISTANCE OF 143.48 FEET; THENCE SOUTH 0°00'00" EAST, A DISTANCE OF 6.07' FEET TO THE POINT OF BEGINNING; THENCE NORTH 90°00'00" EAST, A DISTANCE OF 15.08 FEET; THENCE SOUTH 0°00'00" WEST, A DISTANCE OF 4.50 FEET; THENCE NORTH 90°00'00" EAST, A DISTANCE OF 13.61 FEET; THENCE SOUTH 0°00'00" WEST, A DISTANCE OF 35.31 FEET; THENCE SOUTH 90°00'00" WEST, A DISTANCE OF 30.05 FEET; THENCE NORTH 0°00'00" EAST, A DISTANCE OF 4.89 FEET; THENCE NORTH 90°00'00" EAST, A DISTANCE OF 1.35 FEET; THENCE NORTH 0°00'00" EAST, A DISTANCE OF 34.93 FEET TO THE POINT OF BEGINNING.

SECOND FLOOR

UNIT 202



**EHRHART
GRIFFIN &
ASSOCIATES**

3552 Farnam Street --- Omaha, Nebraska 68131 --- (402) 551-0631
ENGINEERING --- PLANNING --- LAND SURVEYING

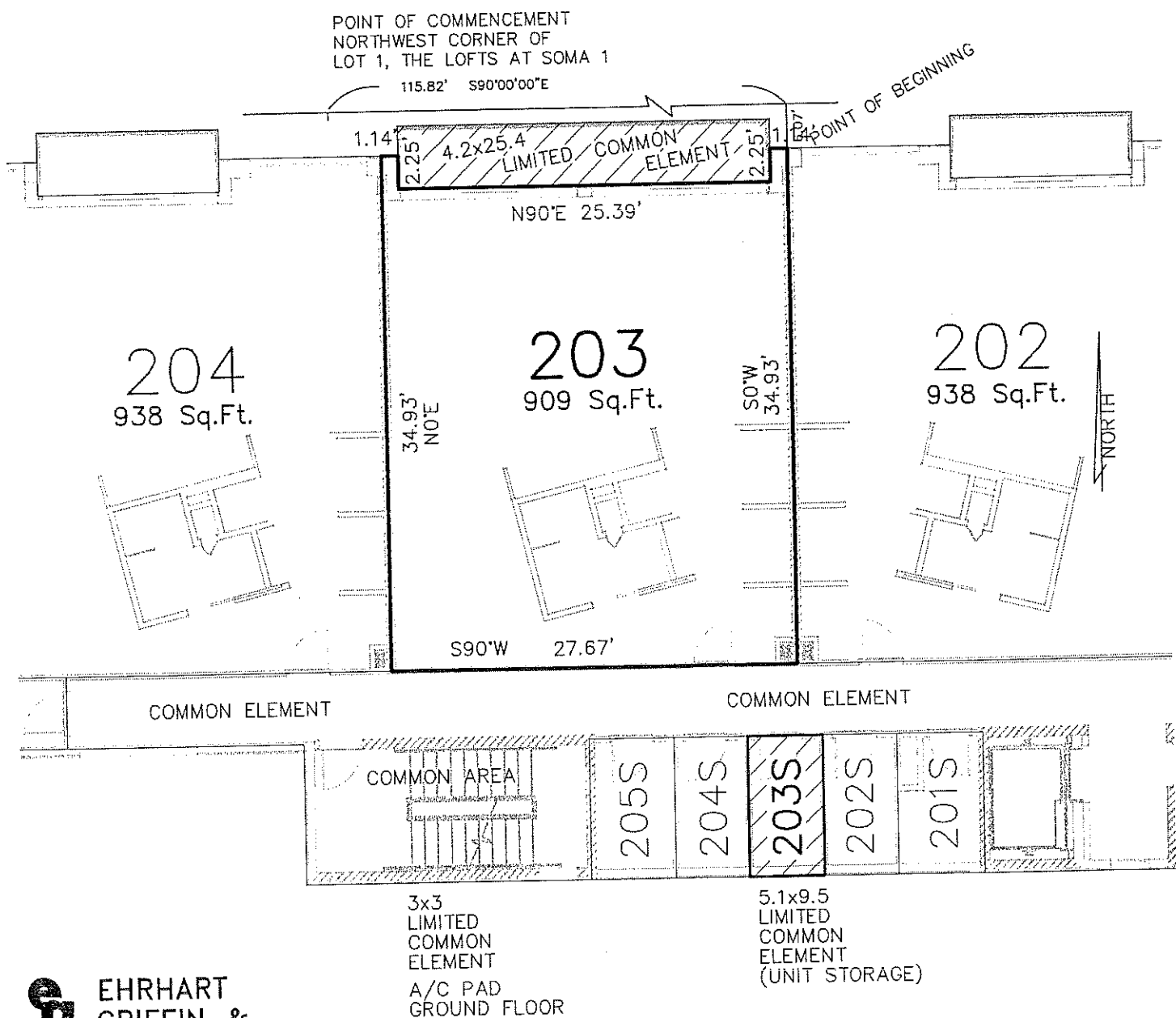
LEGAL DESCRIPTION: UNIT 202, THE LOFTS AT SOMA 1, A CONDOMINIUM

A PORTION OF LOT 1, THE LOFTS AT SOMA 1, AS SURVEYED, PLATTED AND RECORDED IN DOUGLAS COUNTY, NEBRASKA, LYING ABOVE A HORIZONTAL PLANE SITUATED AT ELEVATION 11.00 FEET AND LYING BELOW A HORIZONTAL PLANE SITUATED AT ELEVATION 22.95 FEET, AND HORIZONTALLY BOUNDED AS FOLLOWS:

COMMENCE AT THE NORTHWEST CORNER OF LOT 1, THE LOFTS AT SOMA 1; THENCE SOUTH 90°00'00" EAST ALONG THE NORTH LINE OF SAID LOT 1, A DISTANCE OF 115.82 FEET; THENCE SOUTH 0°00'00" EAST, A DISTANCE OF 6.07 FEET TO THE POINT OF BEGINNING; THENCE NORTH 90°00'00" EAST, A DISTANCE OF 11.10 FEET; THENCE SOUTH 0°00'00" WEST, A DISTANCE OF 2.25 FEET; THENCE NORTH 90°00'00" EAST, A DISTANCE OF 12.42 FEET; THENCE NORTH 0°00'00" EAST, A DISTANCE OF 2.25 FEET; THENCE NORTH 90°00'00" EAST, A DISTANCE OF 4.15 FEET; THENCE SOUTH 0°00'00" WEST, A DISTANCE OF 34.93 FEET; THENCE SOUTH 90°00'00" WEST, A DISTANCE OF 27.67 FEET; THENCE NORTH 0°00'00" EAST, A DISTANCE OF 34.93 FEET TO THE POINT OF BEGINNING.

SECOND FLOOR

UNIT 203



**EHRHART
GRIFFIN &
ASSOCIATES**

3552 Farnam Street -- Omaha, Nebraska 68131 -- (402) 551-0631
ENGINEERING -- PLANNING -- LAND SURVEYING

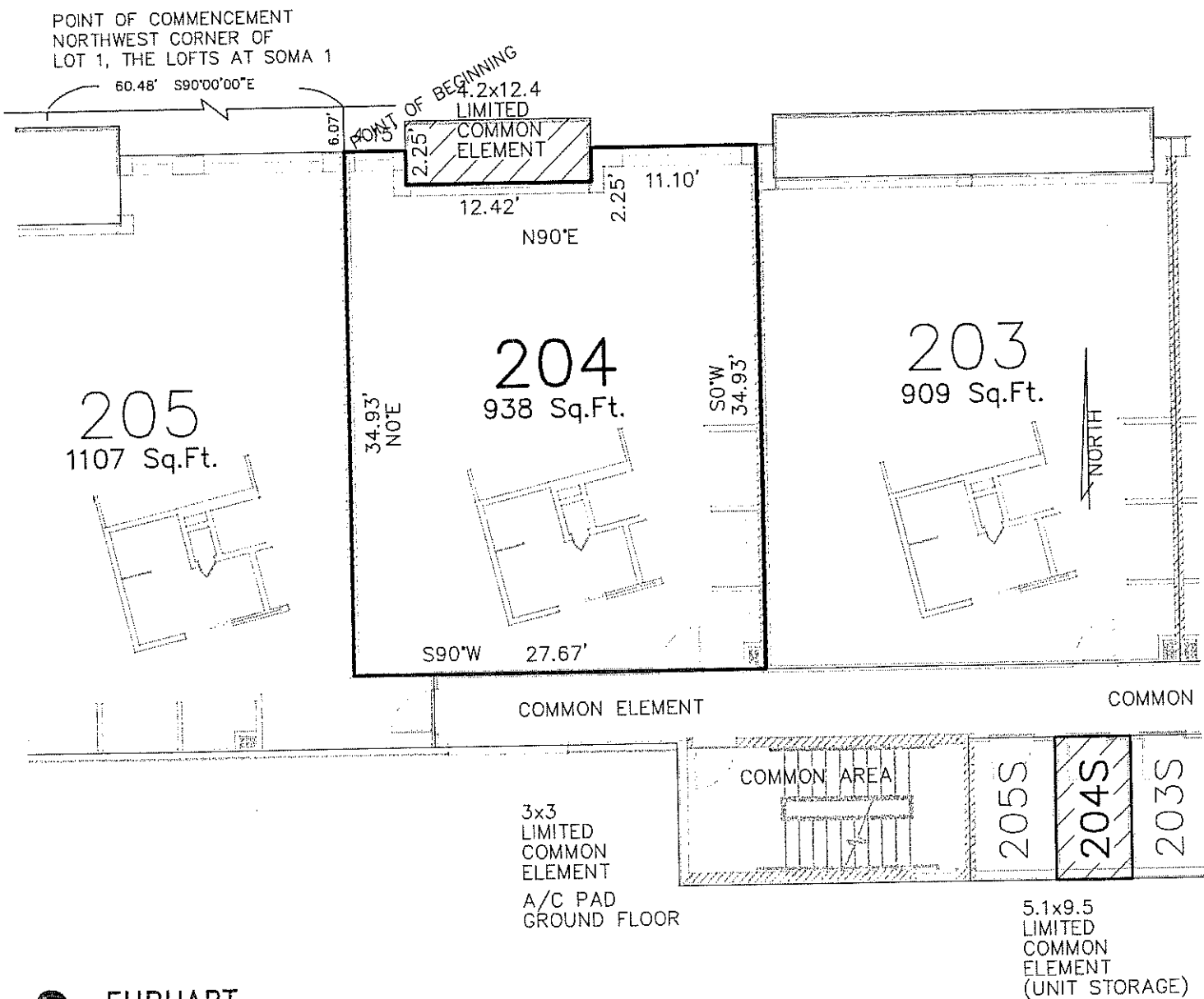
LEGAL DESCRIPTION: UNIT 203, THE LOFTS AT SOMA 1, A CONDOMINIUM

A PORTION OF LOT 1, THE LOFTS AT SOMA 1, AS SURVEYED, PLATTED AND RECORDED IN DOUGLAS COUNTY, NEBRASKA, LYING ABOVE A HORIZONTAL PLANE SITUATED AT ELEVATION 11.00 FEET AND LYING BELOW A HORIZONTAL PLANE SITUATED AT ELEVATION 22.95 FEET, AND HORIZONTALLY BOUNDED AS FOLLOWS:

COMMENCE AT THE NORTHWEST CORNER OF LOT 1, THE LOFTS AT SOMA 1; THENCE SOUTH 90°00'00" EAST ALONG THE NORTH LINE OF SAID LOT 1, A DISTANCE OF 115.82 FEET; THENCE SOUTH 0°00'00" EAST, A DISTANCE OF 6.07 FEET TO THE POINT OF BEGINNING; THENCE CONTINUE SOUTH 0°00'00" WEST, A DISTANCE OF 34.93 FEET; THENCE SOUTH 90°00'00" WEST, A DISTANCE OF 27.67 FEET; THENCE NORTH 0°00'00" EAST, A DISTANCE OF 34.93 FEET; THENCE NORTH 90°00'00" EAST, A DISTANCE OF 1.14 FEET; THENCE SOUTH 0°00'00" WEST, A DISTANCE OF 2.25 FEET; THENCE NORTH 90°00'00" EAST, A DISTANCE OF 25.39 FEET; THENCE NORTH 0°00'00" EAST, A DISTANCE OF 2.25 FEET; THENCE NORTH 90°00'00" EAST, A DISTANCE OF 1.14 FEET TO THE POINT OF BEGINNING.

SECOND FLOOR

UNIT 204



**EHRHART
GRIFFIN &
ASSOCIATES**

3552 Farnam Street -- Omaha, Nebraska 68131 -- (402) 551-0631
ENGINEERING -- PLANNING -- LAND SURVEYING

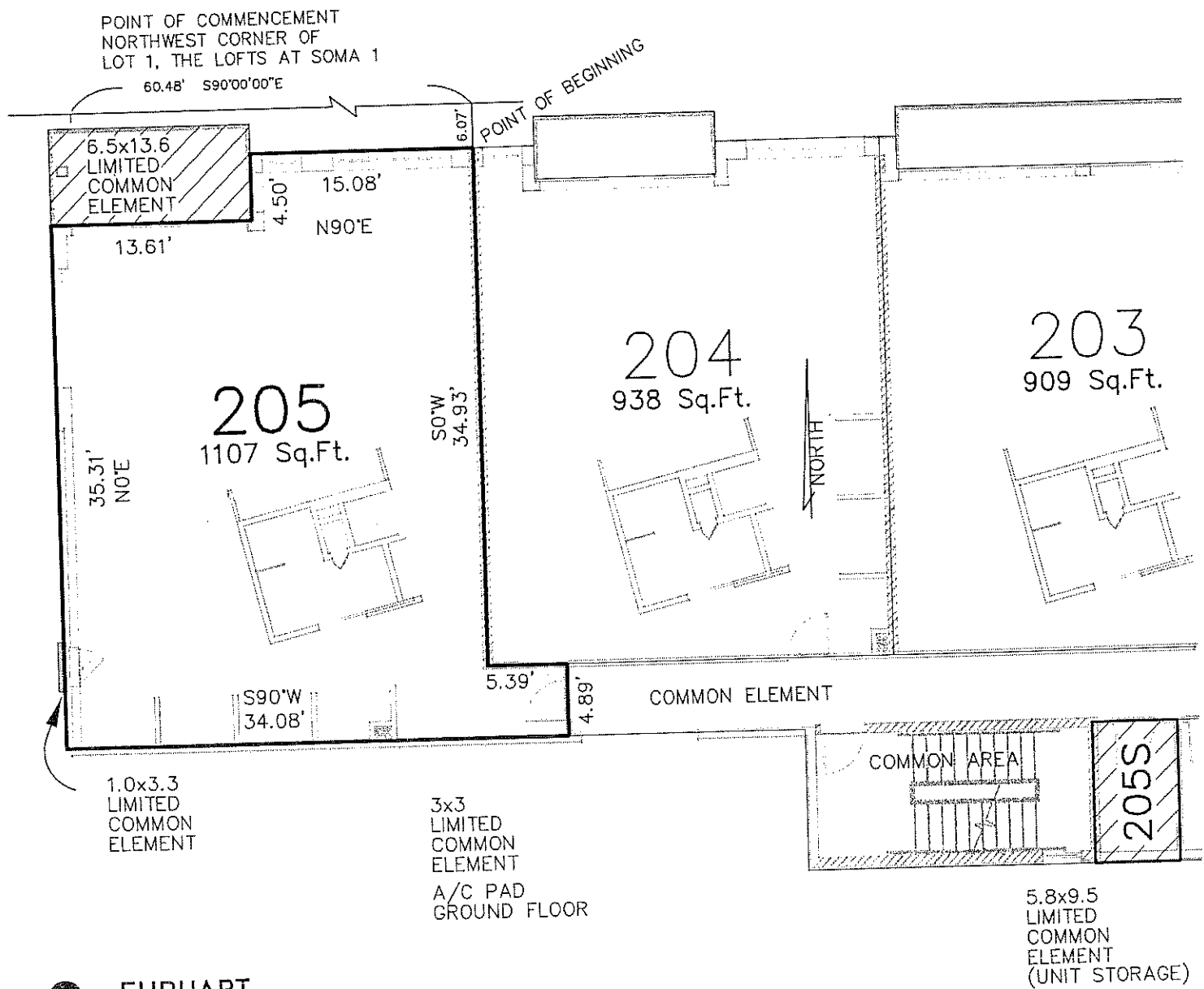
LEGAL DESCRIPTION: UNIT 204, THE LOFTS AT SOMA I, A CONDOMINIUM

A PORTION OF LOT 1, THE LOFTS AT SOMA I, AS SURVEYED, PLATTED AND RECORDED IN DOUGLAS COUNTY, NEBRASKA, LYING ABOVE A HORIZONTAL PLANE SITUATED AT ELEVATION 11.00 FEET AND LYING BELOW A HORIZONTAL PLANE SITUATED AT ELEVATION 22.95 FEET, AND HORIZONTALLY BOUNDED AS FOLLOWS:

COMMENCE AT THE NORTHWEST CORNER OF LOT 1, THE LOFTS AT SOMA I; THENCE SOUTH 90°00'00" EAST ALONG THE NORTH LINE OF SAID LOT 1, A DISTANCE OF 60.48 FEET; THENCE SOUTH 0°00'00" EAST, A DISTANCE OF 6.07 FEET TO THE POINT OF BEGINNING; THENCE NORTH 90°00'00" EAST, A DISTANCE OF 4.15 FEET; THENCE SOUTH 0°00'00" WEST, A DISTANCE OF 2.25 FEET; THENCE NORTH 90°00'00" EAST, A DISTANCE OF 12.42 FEET; THENCE NORTH 0°00'00" EAST, A DISTANCE OF 2.25 FEET; THENCE NORTH 90°00'00" EAST, A DISTANCE OF 11.10 FEET; THENCE SOUTH 0°00'00" WEST, A DISTANCE OF 34.93 FEET; THENCE SOUTH 90°00'00" WEST, A DISTANCE OF 27.67 FEET; THENCE NORTH 0°00'00" EAST, A DISTANCE OF 34.93 FEET TO THE POINT OF BEGINNING.

SECOND FLOOR

UNIT 205



205

LEGAL DESCRIPTION: UNIT 205, THE LOFTS AT SOMA 1, A CONDOMINIUM

A PORTION OF LOT 1, THE LOFTS AT SOMA 1, AS SURVEYED, PLATTED AND RECORDED IN DOUGLAS COUNTY, NEBRASKA, LYING ABOVE A HORIZONTAL PLANE SITUATED AT ELEVATION 11.00 FEET AND LYING BELOW A HORIZONTAL PLANE SITUATED AT ELEVATION 22.95 FEET, AND HORIZONTALLY BOUNDED AS FOLLOWS:

COMMENCE AT THE NORTHWEST CORNER OF LOT 1, THE LOFTS AT SOMA 1; THENCE SOUTH 90°00'00" EAST ALONG THE NORTH LINE OF SAID LOT 1, A DISTANCE OF 60.48 FEET; THENCE SOUTH 0°00'00" EAST, A DISTANCE OF 6.07 FEET TO THE POINT OF BEGINNING; THENCE CONTINUE SOUTH 0°00'00" WEST, A DISTANCE OF 34.93 FEET, THENCE NORTH 90°00'00" EAST, A DISTANCE OF 5.39 FEET; THENCE SOUTH 0°00'00" WEST, A DISTANCE OF 4.89 FEET; THENCE SOUTH 90°00'00" WEST, A DISTANCE OF 34.08 FEET; THENCE NORTH 90°00'00" EAST, A DISTANCE OF 35.31 FEET; THENCE NORTH 90°00'00" EAST, A DISTANCE OF 13.61 FEET; THENCE NORTH 0°00'00" EAST, A DISTANCE OF 4.50 FEET; THENCE NORTH 90°00'00" EAST, A DISTANCE OF 15.08 FEET TO THE POINT OF BEGINNING.